

WAAS CH <b>82638</b> <b>W20A</b>	APP CRS <b>200°</b>	Rwy Idg TDZE Apt Elev	<b>6000</b> <b>309</b> <b>311</b>
--	------------------------	-----------------------------	---

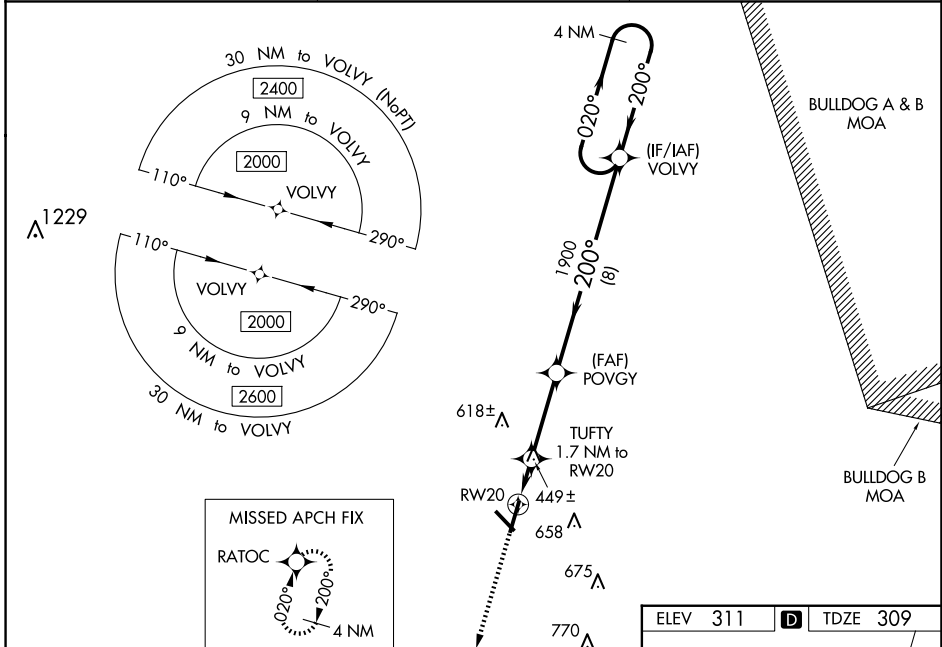
# RNAV (GPS) RWY 20

W H 'BUD' BARRON (DBN)

▼ Night landing: Rwy 32 NA. For uncompensated Baro-VNAV systems, LNAV/VNAV NA below -15°C (5°F) or above 54°C (130°F). Baro-VNAV and VDP NA when using Vidalia altimeter setting.  
 ▲ DME/DME RNP-0.3 NA. Helicopter visibility reduction below 3/4 SM NA. When local altimeter setting not received, use Vidalia altimeter setting; increase LPV DA to 681 feet and LNAV/VNAV DA to 693 feet and all MDA 100 feet; increase LPV all Cats visibility 1/4 mile and LNAV/VNAV all Cats visibility 3/8 mile and LNAV Cat C/D and Circling Cat C/D visibility 1/4 mile.

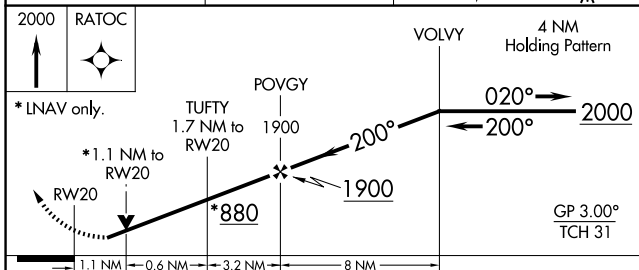
MISSED APPROACH:  
Climb to 2000 direct  
RATOC and hold.

AWOS-3 <b>118.425</b>	ATLANTA APP CON ★ <b>124.2 279.6</b>	UNICOM <b>122.7 (CTAF) 0</b>
--------------------------	---	---------------------------------

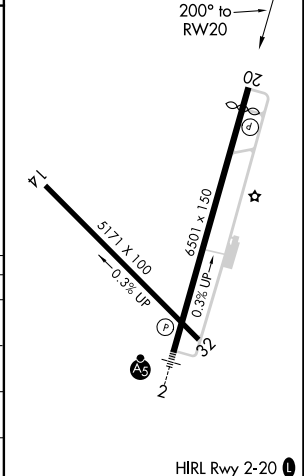


SE-4, 23 JAN 2025 to 20 FEB 2025

SE-4, 23 JAN 2025 to 20 FEB 2025



ELEV 311	<b>D</b>	TDZE 309
----------	----------	----------



CATEGORY	A	B	C	D
LPV DA		587-1	278 (300-1)	
LNAV/VNAV DA		688-1	379 (400-1)	
LNAV MDA	700-1	391 (400-1)	700-1 1/8	391 (400-1 1/8)
<b>C</b> CIRCLING	760-1 449 (500-1)	780-1 469 (500-1)	1020-2 709 (800-2)	1020-2 1/4 709 (800-2 1/4)

HIRL Rwy 2-20 0