

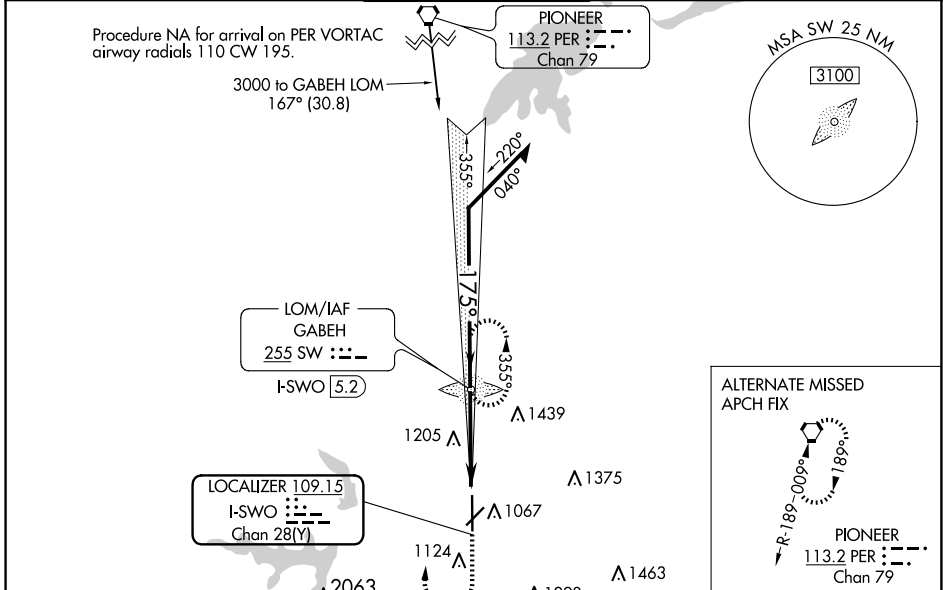
LOC/DME I-SWO 109.15 Chan 28 (Y)	APP CRS 175°	Rwy Idg 7401 TDZE 1000 Apt Elev 1000
--	------------------------	---

ILS or LOC RWY 17

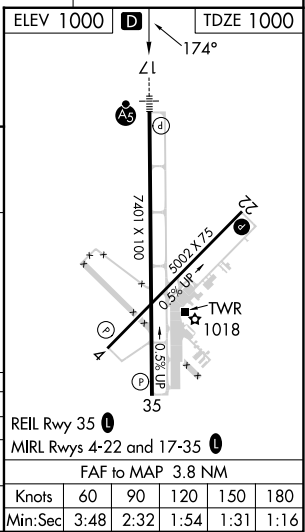
STILLWATER RGNL (SWO)

ADF required.	MALSR AS	<p>MISSED APPROACH: Climb to 1500 then climbing right turn to 3200 direct GABEH LOM and hold, continue climb-in-hold to 3200.</p>
---------------	-------------	--

ASOS 135.725	KANSAS CITY CENTER 127.8 319.1	STILLWATER TOWER ★ 125.35 (CTAF) 0	GND CON 121.6	UNICOM 122.95
------------------------	--	--	-------------------------	-------------------------



VGSI and ILS glidepath not coincident (VGSI Angle 3.00°/TCH 50).		
Remain within 10 NM	GABEH LOM I-SWO 5.2	SW
2600	2260	3200
355°	175°	
GS 3.00° TCH 42	2300	
	I-SWO 2.7	I-SWO 1.4
	2.5 NM	1.3



CATEGORY	A	B	C	D
S-ILS 17		1200-1/2	200 (200-1/2)	
S-LOC 17	1460-1/2	460 (500-1/2)	1460-7/8	460 (500-7/8)
CIRCLING	1460-1 460 (500-1)	1480-1 480 (500-1)	1540-1 1/2 540 (600-1 1/2)	1740-2 1/4 740 (800-2 1/4)

SC-1, 23 JAN 2025 to 20 FEB 2025

SC-1, 23 JAN 2025 to 20 FEB 2025