

WAAS CH <b>42633</b> <b>W35A</b>	APP CRS <b>354°</b>	Rwy Idg TDZE Apt Elev	<b>7401</b> <b>966</b> <b>1000</b>
--	------------------------	-----------------------------	--

# RNAV (GPS) RWY 35

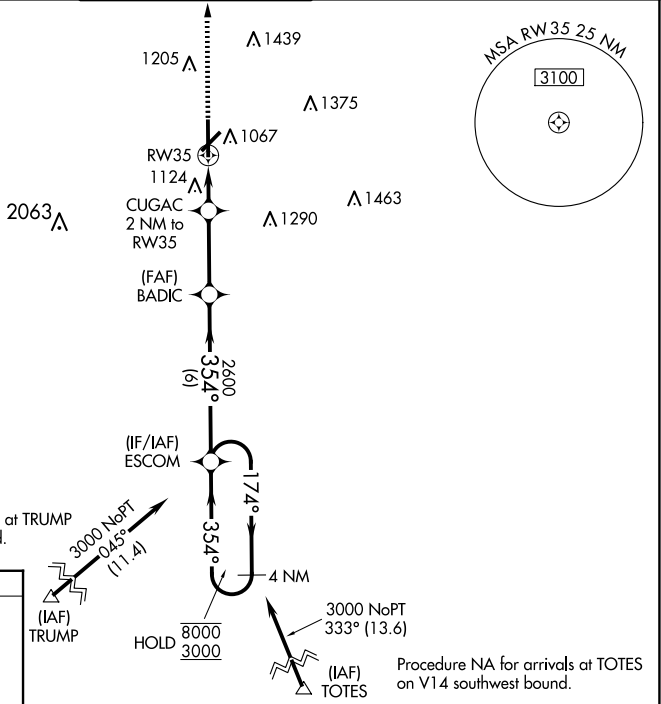
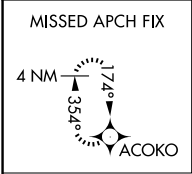
STILLWATER RGNL (SWO)

RNP APCH - GPS.

**⚠** Baro-VNAV and VDP NA when using Ponca City altimeter setting. For uncompensated Baro-VNAV systems, LNAV/VNAV NA below -16°C or above 54°C. When local altimeter setting not received, use Ponca City altimeter setting: increase LPV DA to 1246 feet and all visibilities ½ SM. Increase LNAV/VNAV DA to 1336 feet and all visibilities ¼ SM. Increase all MDAs 80 feet and LNAV visibility Cats C/D ¼, and Circling visibility Cat D ¼ SM.

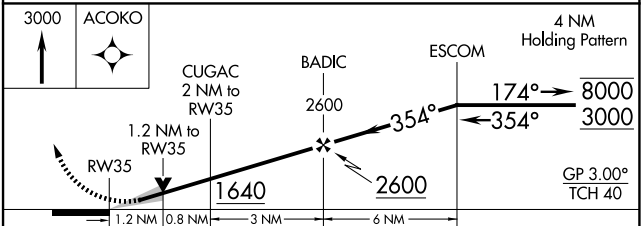
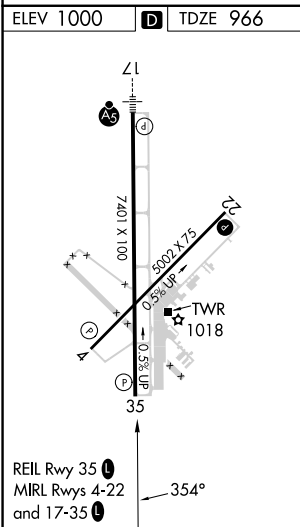
**MISSED APPROACH:**  
Climb to 3000 direct ACOKO and hold.

ASOS <b>135.725</b>	KANSAS CITY CENTER <b>127.8 319.1</b>	STILLWATER TOWER ★ <b>125.35 (CTAF) 0</b>	GND CON <b>121.6</b>	UNICOM <b>122.95</b>
------------------------	--	--	-------------------------	-------------------------



Procedure NA for arrivals at TRUMP on V354 southwest bound.

Procedure NA for arrivals at TOTES on V14 southwest bound.



CATEGORY	A	B	C	D
LPV DA		1166-¾	200 (200-¾)	
LNAV/VNAV DA		1256-1	290 (300-1)	
LNAV MDA	1380-1	414 (400-1)	1380-1½	414 (400-1½)
<b>C</b> CIRCLING	1460-1 460 (500-1)	1480-1 480 (500-1)	1540-1½ 540 (600-1½)	1740-2¼ 740 (800-2¼)

SC-1, 23 JAN 2025 to 20 FEB 2025

SC-1, 23 JAN 2025 to 20 FEB 2025