


VOR/DME SWO 108.4 Chan 21	APP CRS 178°	Rwy Idg 7401 TDZE 1000 Apt Elev 1000
--	------------------------	---

VOR RWY 17

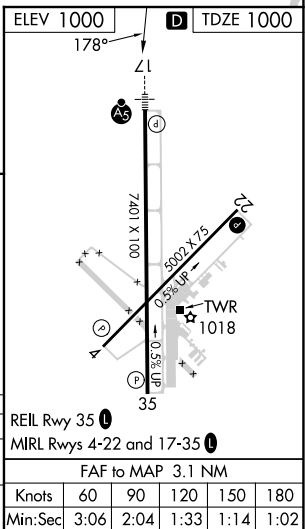
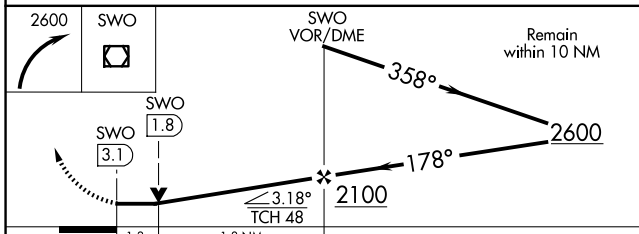
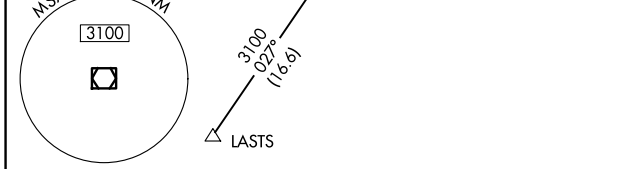
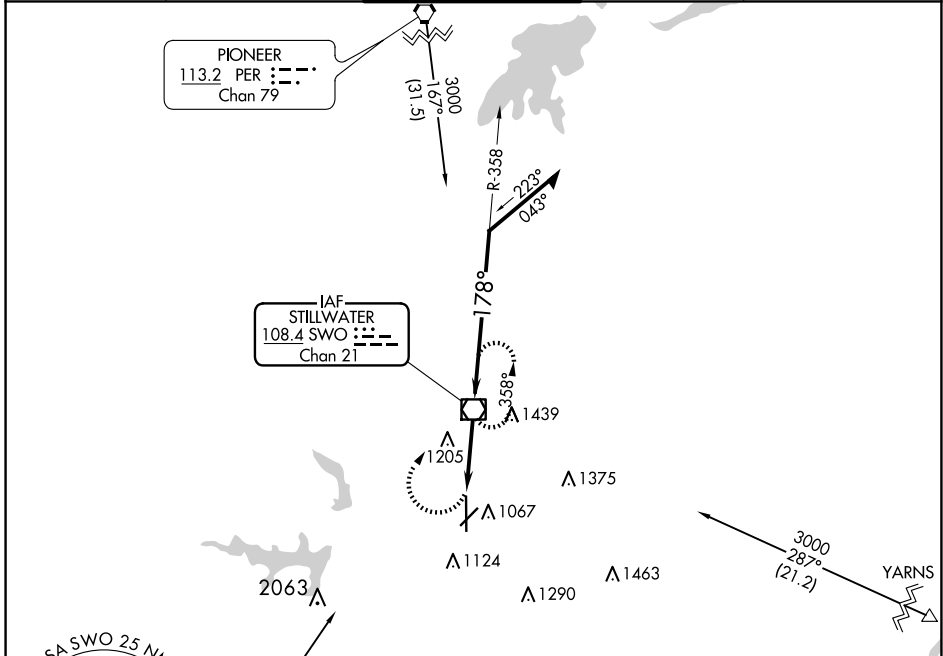
STILLWATER RGNL (SWO)

⚠ When local altimeter setting not received, use Ponca City Rgnl altimeter setting and increase all MDA 80 feet and Circling Cat D visibility ½ mile. VDP NA with Ponca City altimeter setting. For inop MALSRS increase S-17 Cats A/B visibility to 1 mile. Helicopter visibility reduction below ¾ SM NA.

MALSRS 

MISSED APPROACH: Climbing right turn to 2600 direct SWO VOR/DME and hold.

ASOS 135.725	KANSAS CITY CENTER 127.8 319.1	STILLWATER TOWER ★ 125.35 (CTAF) 0	GND CON 121.6	UNICOM 122.95
------------------------	--	---	-------------------------	-------------------------



CATEGORY	A	B	C	D	Knots	60	90	120	150	180
S-17	1460-¾ 460 (500-¾)			1460-1 460 (500-1)	Min:Sec	3:06	2:04	1:33	1:14	1:02
CIRCLING	1460-1	460 (500-1)	1520-1½ 520 (600-1½)	1740-2¼ 740 (800-2¼)						

SC-1, 23 JAN 2025 to 20 FEB 2025

SC-1, 23 JAN 2025 to 20 FEB 2025