

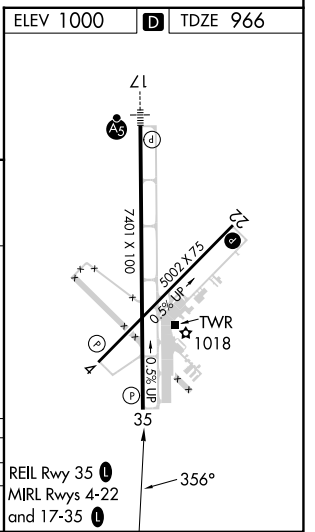
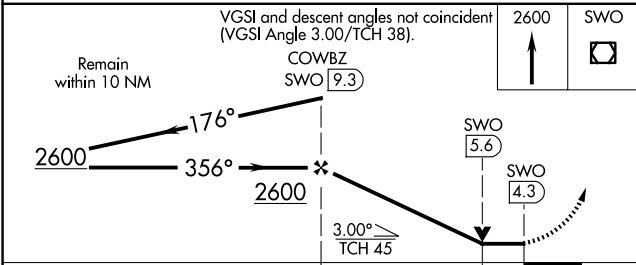
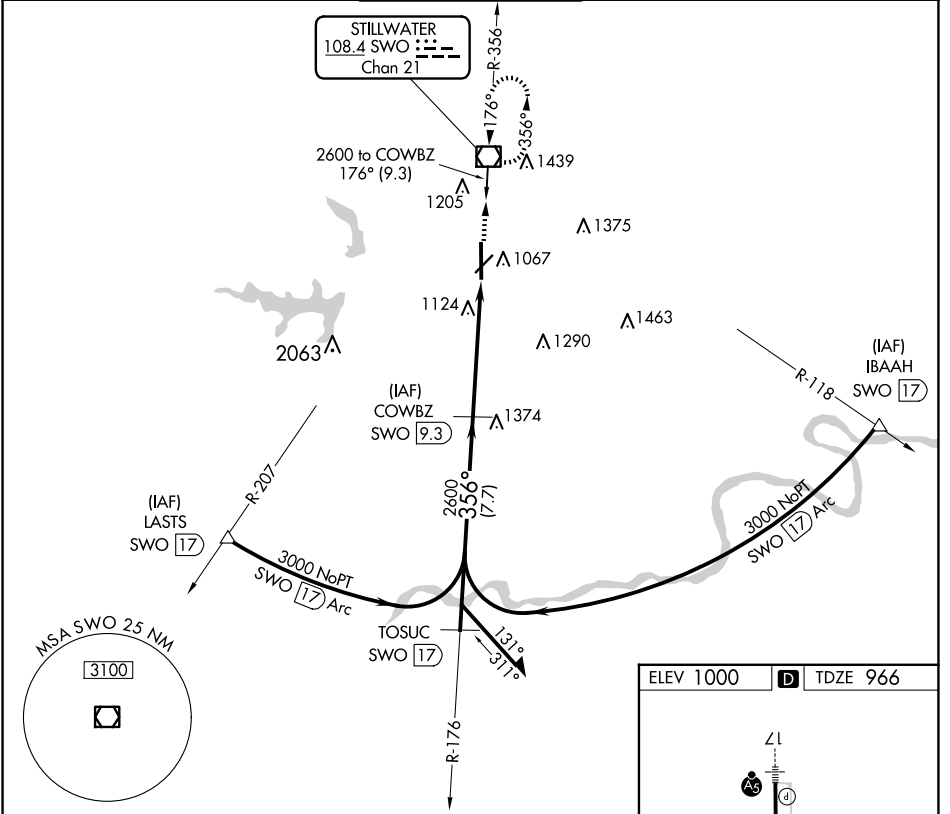
VOR/DME SWO <b>108.4</b> Chan 21	APP CRS <b>356°</b>	Rwy Idg <b>7401</b> TDZE <b>966</b> Apt Elev <b>1000</b>
--	------------------------	--

**VOR/DME RWY 35**  
STILLWATER RGNL (SWO)

When local altimeter setting not received, use Ponca City Rgnl altimeter setting and increase all MDA 80 feet; S-35 Cats C/D visibility ¼ mile; Circling Cat D visibility ½ mile. VDP NA with Ponca City altimeter setting.

MISSED APPROACH: Climb to 2600 direct SWO VOR/DME and hold.

ASOS <b>135.725</b>	KANSAS CITY CENTER <b>127.8 319.1</b>	STILLWATER TOWER ★ <b>125.35</b> (CTAF) 0	GND CON <b>121.6</b>	UNICOM <b>122.95</b>
------------------------	--	--	-------------------------	-------------------------



CATEGORY	A		B		C		D	
S-35	1380-1		414 (400-1)		1380-1¼		414 (400-1¼)	
CIRCLING	1420-1 420 (500-1)		1460-1 460 (500-1)		1520-1½ 520 (600-1½)		1740-2¼ 740 (800-2¼)	

STILLWATER, OKLAHOMA  
Amdt 1B 21AUG14

36°10'N-97°05'W

STILLWATER RGNL (SWO)  
**VOR/DME RWY 35**

SC-1, 23 JAN 2025 to 20 FEB 2025

SC-1, 23 JAN 2025 to 20 FEB 2025