

APP CRS	Rwy Idg	<b>3606</b>
<b>109°</b>	TDZE	<b>78</b>
	Apt Elev	<b>78</b>

# RNAV (GPS) RWY 8

HANA (HNM)(PHHN)

RNP APCH.

**∇** Circling NA south of Rwy 8-26. Procedure NA at night.  
**△ NA** Rwy 8 helicopter visibility reduction below 1 SM NA.  
 When local altimeter setting not received, procedure NA.

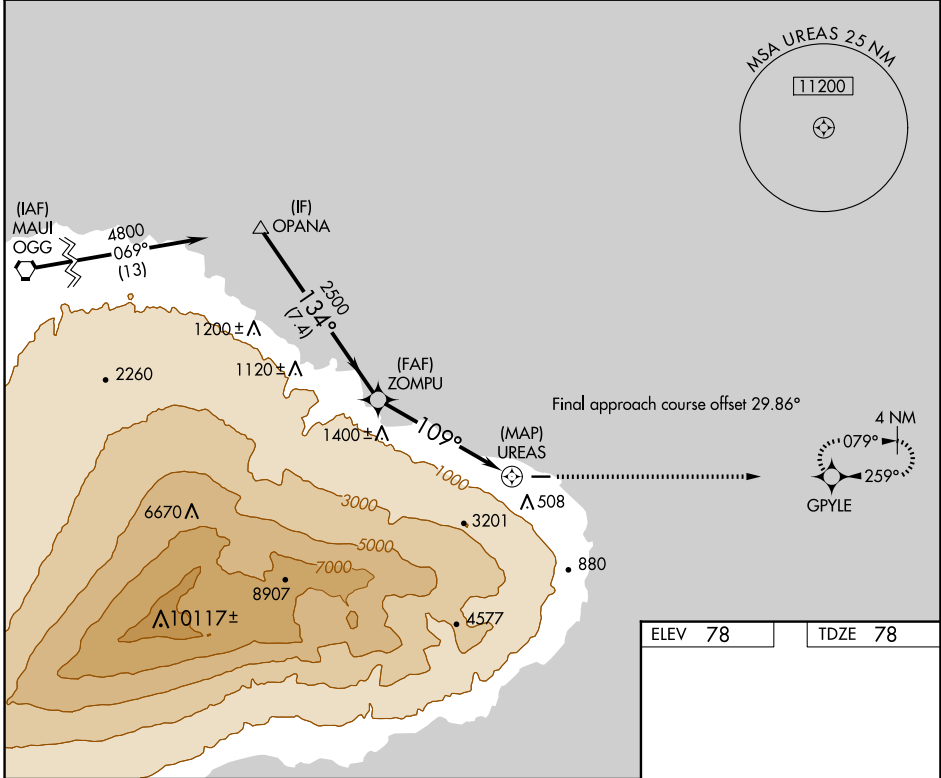
MISSED APPROACH: Climb to 2500 direct GPYLE and hold.

AWOS-3PT  
**118.325**

HCF CENTER  
**118.45 278.3**

CLNC DEL  
**122.3**

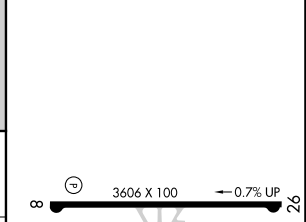
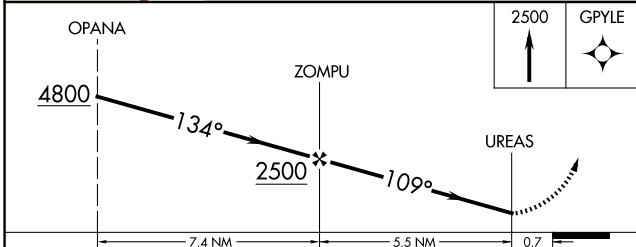
CTAF  
**122.9**



PAC, 26 DEC 2024 to 20 FEB 2025

PAC, 26 DEC 2024 to 20 FEB 2025

ELEV <b>78</b>	TDZE <b>78</b>
----------------	----------------



CATEGORY	A	B	C	D
LNVA MDA	1500-1¼ 1422 (1500-1¼)	1500-1½ 1422 (1500-1½)	NA	
<b>C</b> CIRCLING	1500-1¼ 1422 (1500-1¼)	1500-1½ 1422 (1500-1½)	NA	

MRL Rwy 8-26