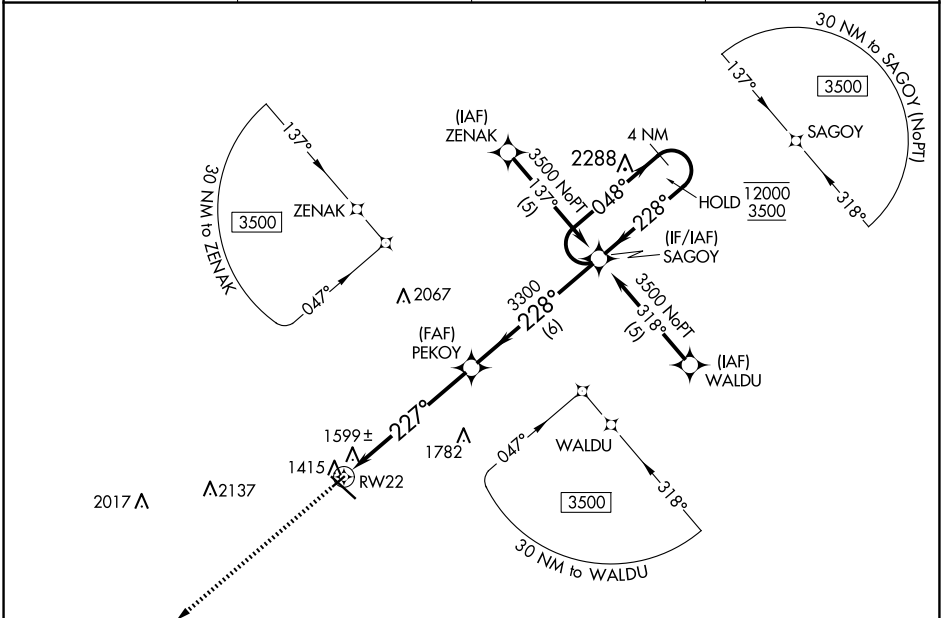


APP CRS 227°	Rwy Idg TDZE Apt Elev	3075 1352 1354
------------------------	-----------------------------	---

RNAV (GPS) RWY 22

RANGE RGNL (HIB)

RNP APCH - GPS.		MISSED APPROACH: Climb to 3500 direct SEYOP and hold.	
ASOS 126.425	DULUTH APP CON 125.45 233.7	CLINC DEL 127.4	UNICOM 123.0 (CTAF) 0



NC-1, 23 JAN 2025 to 20 FEB 2025

NC-1, 23 JAN 2025 to 20 FEB 2025

ELEV 1354	D TDZE 1352
-----------	--------------------

The inset chart shows the 4 NM holding pattern for RWY 22. The holding pattern is a racetrack with 048° inbound and 228° outbound legs. The final approach to RWY 22 is at 227°. Key altitudes include 1411, 12000, and 3500. Distances of 1.5 NM and 6.75 NM are indicated. A 67.5 x 150 ft runway width is noted. The chart also shows the 30 NM to RWY 22 and 30 NM to SAGOY (NoPT) holding patterns.

3500	SEYOP	SAGOY	
↑	✧	PEKOY	4 NM Holding Pattern
RW22		12000	
1.5 NM to RW22		048° →	
2.99° TCH 45		← 228°	
RW22		3300	
1.5 NM		6 NM	
CATEGORY	A	B	C
LNAV MDA	1860-1	508 (600-1)	NA
CIRCLING	1900-1	546 (600-1)	NA