

LOC/DME I-FYJ 109.55 Chan 32 (Y)	APP CRS 094°	Rwy Idg TDZE Apt Elev	5000 14 20
---	------------------------	-----------------------------	---------------------------------------

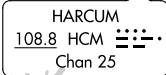
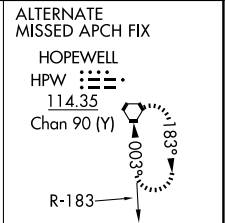
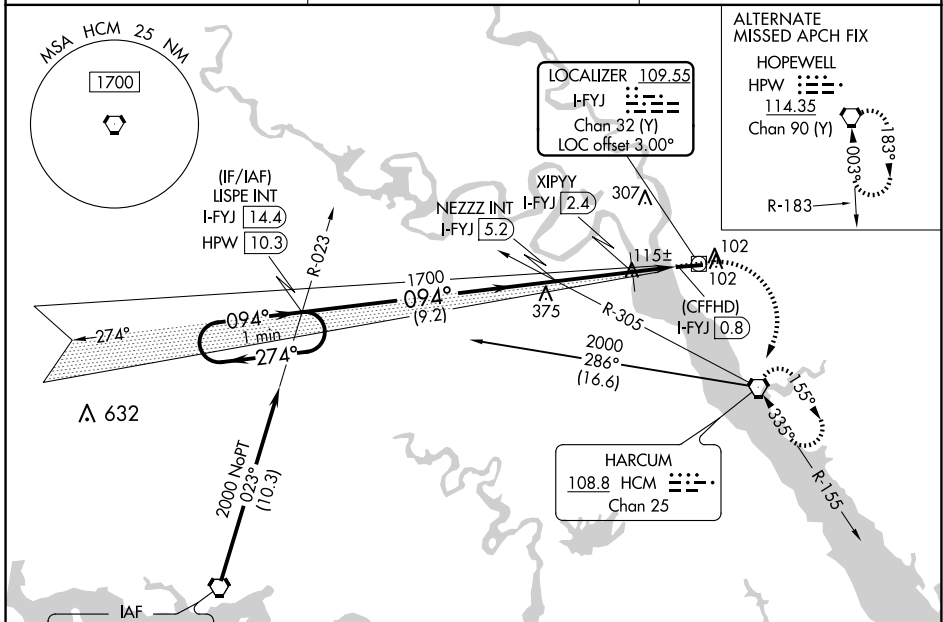
LOC RWY 10

MIDDLE PENINSULA RGNL (F'YJ)

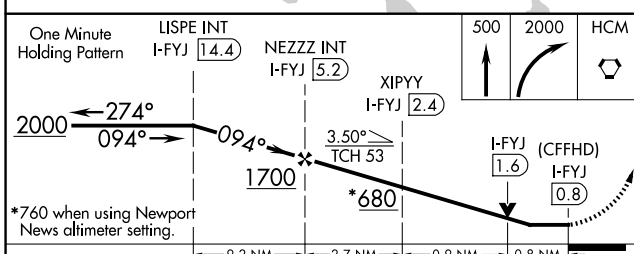
NA When local altimeter setting not received, use Newport News altimeter setting and increase all MDA 80 feet and increase S-10 Cat B and Circling Cat B visibility ¼ SM. VDP NA when using Newport News altimeter setting.

MISSED APPROACH: Climb to 500 then climbing right turn to 2000 direct HCM VORTAC and hold, continue climb-in-hold to 2000.

AWOS-3 132.825	POTOMAC APP CON 126.4 282.375	UNICOM 123.0 (CTAF) 0
--------------------------	---	---------------------------------

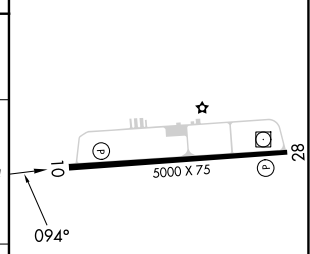


Procedure NA for arrivals on HPW VORTAC airway radials 323 CW 025.



ELEV 20	TDZE 14
---------	---------

One Minute Holding Pattern	LISPE INT I-FYJ 14.4	NEZZ INT I-FYJ 5.2	XIPYY I-FYJ 2.4	500	2000	HCM
*760 when using Newport News altimeter setting.						
CATEGORY	A	B	C	D		
S-10	680-1	666 (700-1)			NA	
CIRCLING	680-1	660 (700-1)			NA	
XIPYY FIX MINIMUMS						
S-10	380-1	366 (400-1)			NA	
CIRCLING	480-1 460 (500-1)	620-1 600 (600-1)			NA	



MIRL Rwy 10-28
REIL Rws 10 and 28

FAF to MAP 4.4 NM

Knots	60	90	120	150	180
Min:Sec	4:24	2:56	2:12	1:46	1:28

NE-3, 23 JAN 2025 to 20 FEB 2025

NE-3, 23 JAN 2025 to 20 FEB 2025