

AIRPORT DIAGRAM

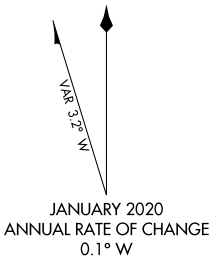
AL-5180 (FAA)

COLES COUNTY MEML (MTO)
MATTOON/CHARLESTON, ILLINOIS

ASOS
118.475
CTAF/UNICOM
122.7



FIELD
ELEV
722



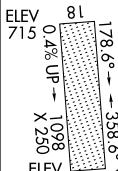
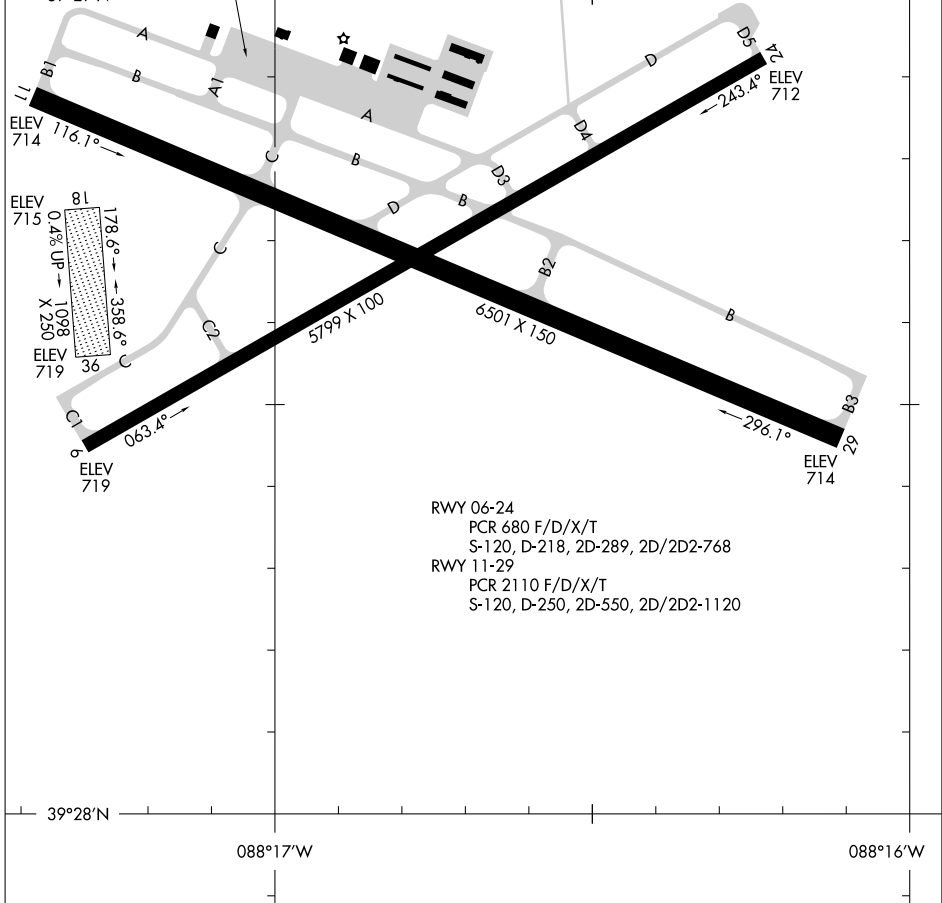
▲ 780

APRON

FIRE STATION

39°29'N

EC-3, 23 JAN 2025 to 20 FEB 2025



ELEV 714
116.1°

ELEV 719
250

ELEV 719
063.4°

5799 X 100

6501 X 150

ELEV 712
243.4°

ELEV 714
296.1°

RWY 06-24
PCR 680 F/D/X/T
S-120, D-218, 2D-289, 2D/2D2-768

RWY 11-29
PCR 2110 F/D/X/T
S-120, D-250, 2D-550, 2D/2D2-1120

39°28'N

088°17'W

088°16'W

EC-3, 23 JAN 2025 to 20 FEB 2025

AIRPORT DIAGRAM

MATTOON/CHARLESTON, ILLINOIS
COLES COUNTY MEML (MTO)