



| | | | |
|---------------------------|------------------------|-----------------------------|---|
| LOC I-BRD 109.9 | APP CRS 231° | Rwy ldg TDZE Apt Elev | 6512 1224 1232 |
|---------------------------|------------------------|-----------------------------|---|

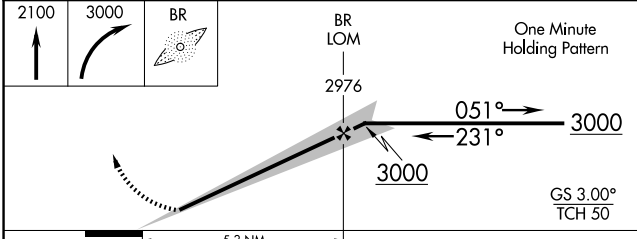
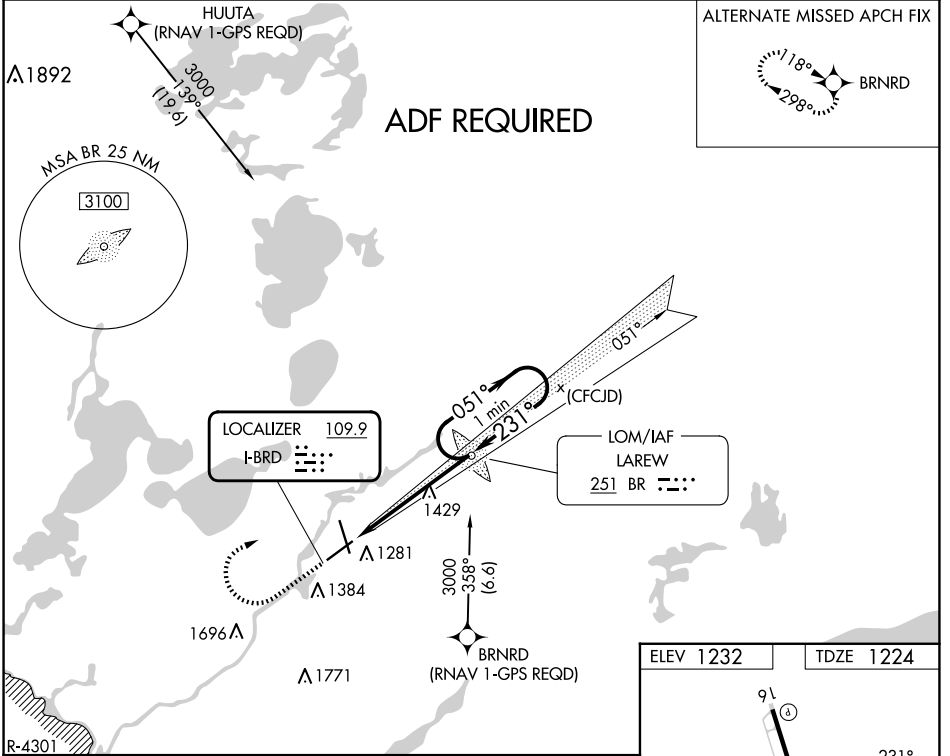
ILS or LOC RWY 23


BRainerd LAKES RGnl (BRD)

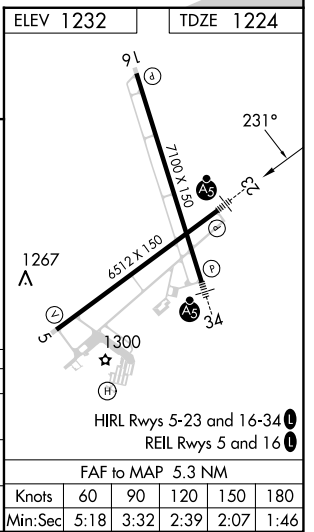
ADF REQUIRED. When local altimeter setting not received, use Aitkin altimeter setting and increase all DAs 52 feet and all MDAs 60 feet. Increase S-LOC Cat C visibility to 1 SM and Circling Cat D visibility to 2 1/4 SM.

MALSR  MISSED APPROACH: Climb to 2100 then climbing right turn to 3000 direct LAREW LOM and hold.

| | | |
|------------------------|---|---|
| ASOS 126.775 | MINNEAPOLIS CENTER 118.05 239.0 | UNICOM 122.7 (CTAF)  |
|------------------------|---|---|



| CATEGORY | A | B | C | D |
|--|------------------------|---------------|-------------------------------|-----------------------|
| S-ILS 23 | 1424-1/2 200 (200-1/2) | | | |
| S-LOC 23 | 1680-1/2 | 456 (500-1/2) | 1680-7/8 456 (500-7/8) | 1680-1 456 (500-1) |
|  CIRCLING | 1760-1 | 528 (600-1) | 1760-1 1/2 528 (600-1 1/2) | 1860-2 628 (700-2) |



NC-1, 23 JAN 2025 to 20 FEB 2025

NC-1, 23 JAN 2025 to 20 FEB 2025