

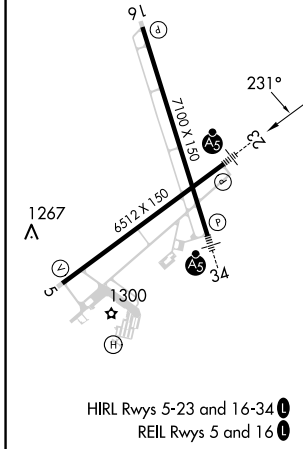
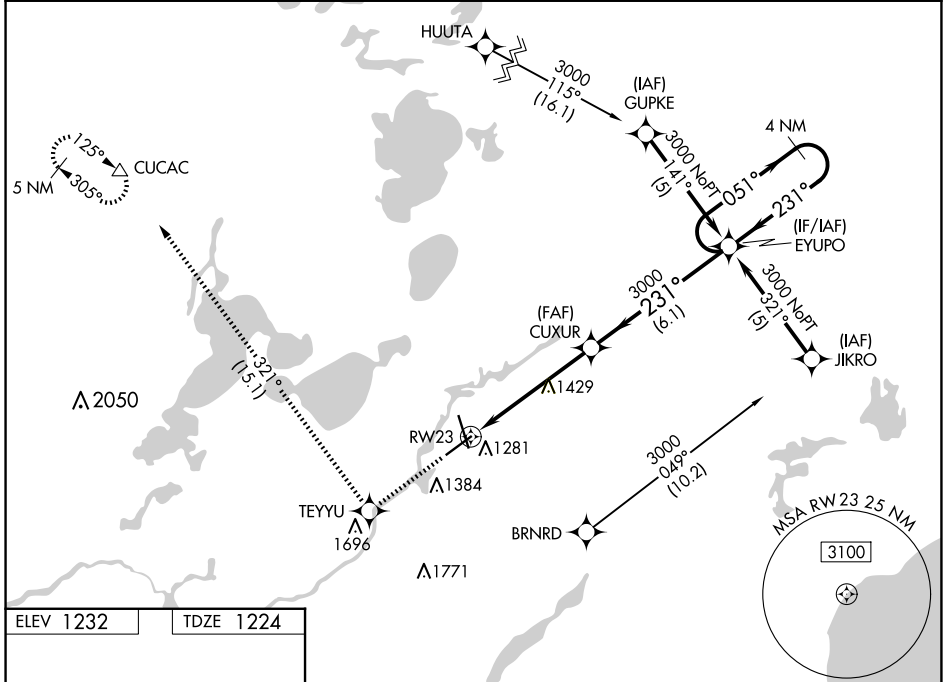
WAAS CH 82502 W23A	APP CRS 231°	Rwy Idg TDZE 1224 Apt Elev 1232
--	------------------------	---

RNAV (GPS) RWY 23

BRainerd LAKES RGNL (BRD)

RNP APCH. ▼ For uncompensated Baro-VNAV systems, LNAV/VNAV NA below -17°C or above 54°C. Baro-VNAV and VDP NA when using Aikiri altimeter setting. When local altimeter setting not received, use Aikiri altimeter setting and increase all DAs 52 feet and all MDAs 60 feet.	MALSR 	MISSED APPROACH: Climb to 3300 direct TEYU and on track 321° to CUCAC and hold.
--	-----------	---

ASOS 126.775	MINNEAPOLIS CENTER 118.05 239.0	UNICOM 122.7 (CTAF) 1
------------------------	---	--



3300	TEYU	Tr 321°	CUCAC	CUXUR	EYUPO	4 NM Holding Pattern
*LNAV only		*1.5 NM to RWY23		GP 3.00° TCH 50		
1.5 NM		3.8 NM		6.1 NM		
CATEGORY	A	B	C	D		
LPV DA		1501-½	277 (300-½)			
LNAV/VNAV DA		1573-¾	349 (400-¾)			
LNAV MDA	1760-½	536 (600-½)	1760-1 536 (600-1)	1760-1½ 536 (600-1¼)		
CIRCLING	1760-1	528 (600-1)	1760-1½ 528 (600-1½)	1860-2 628 (700-2)		

NC-1, 23 JAN 2025 to 20 FEB 2025

NC-1, 23 JAN 2025 to 20 FEB 2025