

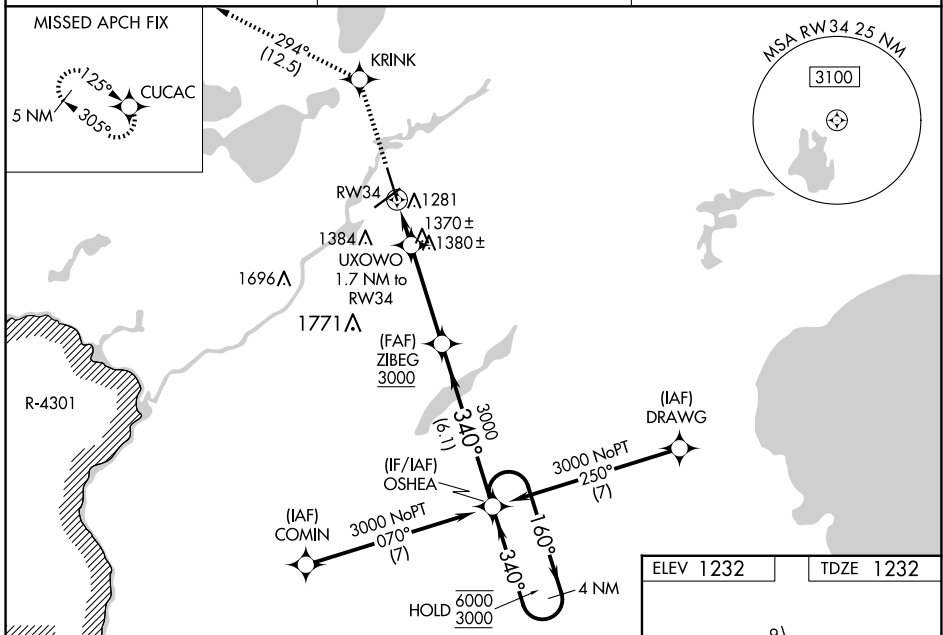
WAAS CH <b>70711</b> <b>W34A</b>	APP CRS <b>340°</b>	Rwy Idg <b>7100</b>
		TDZE <b>1232</b>
		Apt Elev <b>1232</b>

# RNAV (GPS) RWY 34

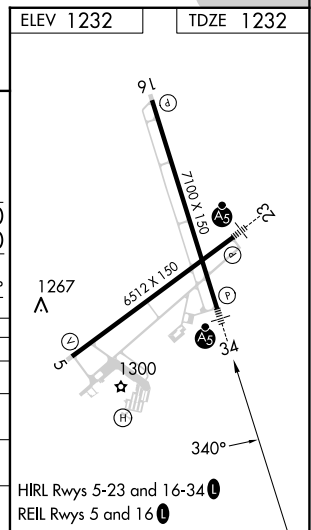
BRAINERD LAKES RGNL (BRD)

RNP APCH - GPS.		MALSR
<p><b>⚠</b> For uncompensated Baro-VNAV systems, LNAV/VNAV NA below -21°C or above 54°C. Baro-VNAV and VDP NA when using AIT altimeter setting. When local altimeter setting not received, use AIT altimeter setting and increase LPV DA to 1484 feet; increase LNAV/VNAV DA to 1578 feet and all visibilities ½ SM. Increase all MDAs 60 feet and LNAV visibility Cat C/D ¼ SM. For inop ALS when using AIT altimeter setting, increase LNAV/VNAV all Cats visibility to 1 SM. For inop ALS increase LNAV/VNAV all Cats visibility to ¾ SM.</p>		MISSED APPROACH: Climb to 3300 direct KRINK and on 294° track to CUCAC and hold.

ASOS <b>126.775</b>	MINNEAPOLIS CENTER <b>118.05 239.0</b>	UNICOM <b>122.7 (CTAF)</b>
------------------------	-------------------------------------------	-------------------------------



3300	KRINK	tr 294°	CUCAC
UXOWO 1.7 NM to RW34 RW34 1.1 NM to RW34 1820 3000 340° 3000 160° → 6000 ← 340° 3000 4 NM Holding Pattern GP 3.00° TCH 47			
1.1 NM	0.6 NM	3.7 NM	6.1 NM
CATEGORY	A	B	C
LPV DA	1432-½		200 (200-½)
LNAV/VNAV DA	1526-½		294 (300-½)
LNAV MDA	1620-½	388 (400-½)	1620-⅝ 388 (400-⅝)
CIRCLING	1760-1	528 (600-1)	1760-1½ 528 (600-1½) 1840-2 608 (700-2)



NC-1, 23 JAN 2025 to 20 FEB 2025

NC-1, 23 JAN 2025 to 20 FEB 2025