

WAAS CH 78104 W27A	APP CRS 264°	Rwy Idg TDZE 843 Apt Elev 845	6701 843 845
--	------------------------	---	---

RNAV (GPS) RWY 27R

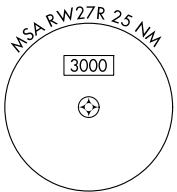
GRAND FORKS INTL (GFK)

RNP APCH - GPS.

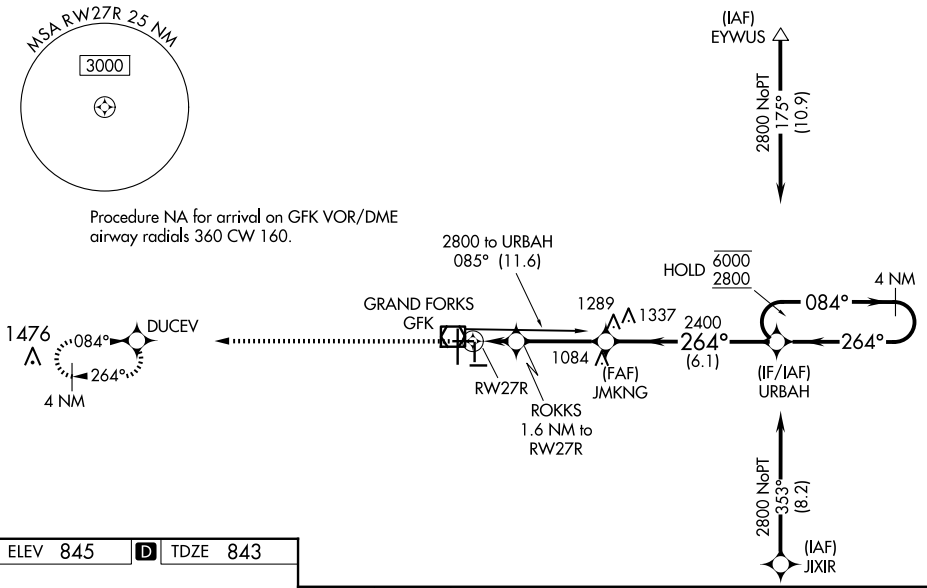
⚠ Baro-VNAV and VDP NA when using KKN altimeter setting. For uncompensated Baro-VNAV systems, LNAV/VNAV NA below -21°C or above 54°C. When local altimeter setting not received, use KKN altimeter setting and increase LPV DA to 1104 feet and all visibilities 1/8 SM. Increase LNAV/VNAV DA to 1178 feet and all visibilities 1/8 SM. Increase all MDAs 80 feet and LNAV visibility Cat C/D 3/8 SM, and Circling visibility Cat C 1/4 SM.

MISSED APPROACH: Climb to 4000 direct DUCEV and hold, continue climb-in-hold to 4000.

ATIS 119.4	GRAND FORKS APP CON ★ 118.1 318.1	GRAND FORKS TOWER★ 118.4(CTAF) 350.35	GND CON 124.575	CLNC DEL 135.725	UNICOM 122.95
----------------------	---	---	---------------------------	----------------------------	-------------------------



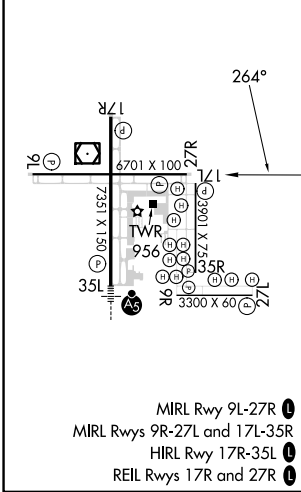
Procedure NA for arrival on GFK VOR/DME airway radials 360 CW 160.



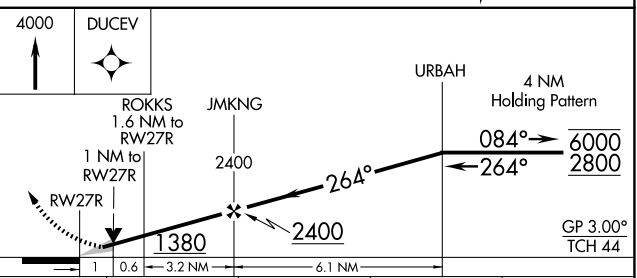
NC-1, 23 JAN 2025 to 20 FEB 2025

NC-1, 23 JAN 2025 to 20 FEB 2025

ELEV 845	D	TDZE 843
----------	----------	----------



- MIRL Rwy 9L-27R
- MIRL Rwys 9R-27L and 17L-35R
- HIRL Rwy 17R-35L
- REIL Rwys 17R and 27R



CATEGORY	A	B	C	D
LPV DA		1043-3/4	200 (200-3/4)	
LNAV/VNAV DA		1117-7/8	274 (300-7/8)	
LNAV MDA		1220-1	377 (400-1)	
C CIRCLING	1260-1 415 (500-1)	1300-1 455 (500-1)	1400-1 1/2 555 (600-1 1/2)	1420-2 575 (600-2)