

GARLAND FIVE DEPARTURE
(GARLS.TT) 251AN24

ARLINGTON, TEXAS
ARLINGTON MUNI (GKY)

LONE STAR DEP CON
135.975 379.9
CLNC DEL
121.875
CLNC DEL (when twr closed)
118.85
GND CON
121.875
ARLINGTON TOWER ★
128.625 (CTAF)

**TOP ALTITUDE:
ASSIGNED BY ATC**

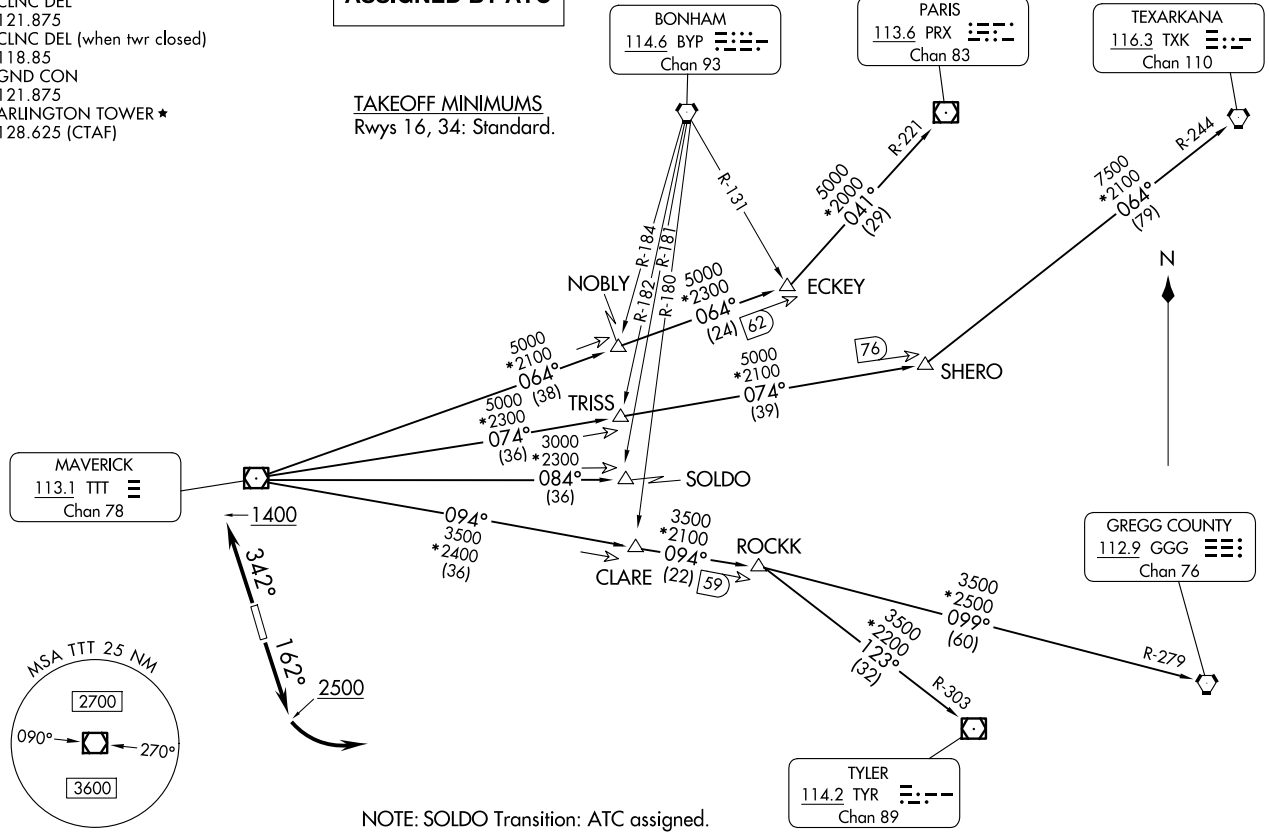
TAKEOFF MINIMUMS
Rwys 16, 34: Standard.

RADAR and DME required.

(GARLS.TT) 24305
GARLAND FIVE DEPARTURE

AL-5189 (FAA)

ARLINGTON MUNI (GKY)
ARLINGTON, TEXAS



NOTE: SOLDO Transition: ATC assigned.

(CONTINUED ON FOLLOWING PAGE)

NOTE: Chart not to scale.

GARLAND FIVE DEPARTURE



DEPARTURE ROUTE DESCRIPTION

TAKEOFF RUNWAY 16: Climb on heading 162° to 2500 before turning left.

TAKEOFF RUNWAY 34: Climb on heading 342° to 1400 before turning southeast bound.

When entering controlled airspace, fly assigned heading for RADAR vectors to appropriate route. Maintain ATC assigned altitude.

GREGG COUNTY TRANSITION (GARL5.GGG): From over TTT VOR/DME on TTT R-094 to ROCKK, then on GGG R-279 to GGG VORTAC.

PARIS TRANSITION (GARL5.PRX): From over TTT VOR/DME on TTT R-064 to ECKEY, then on PRX R-221 to PRX VOR/DME.

SOLDO TRANSITION (GARL5.SOLDO): From over TTT VOR/DME on TTT R-084 to SOLDO.

TEXARKANA TRANSITION (GARL5.TXK): From over TTT VOR/DME on TTT R-074 to SHERO, then on TXK R-244 to TXK VORTAC.

TYLER TRANSITION (GARL5.TYR): From over TTT VOR/DME on TTT R-094 to ROCKK, then on TYR R-303 to TYR VOR/DME.

SC-2, 23 JAN 2025 to 20 FEB 2025

SC-2, 23 JAN 2025 to 20 FEB 2025