

APP CRS	Rwy Idg	6080
162°	TDZE	628
	Apt Elev	628

RNAV (GPS) RWY 16

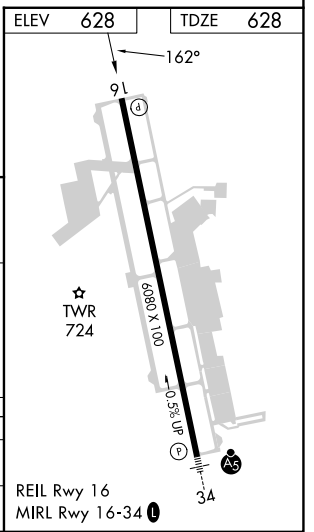
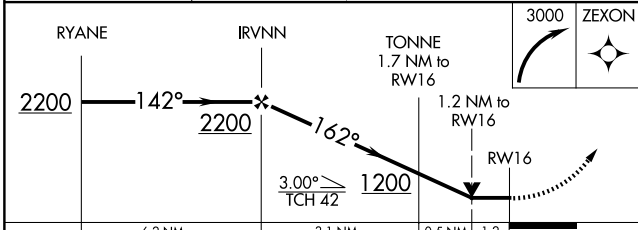
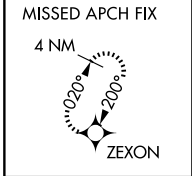
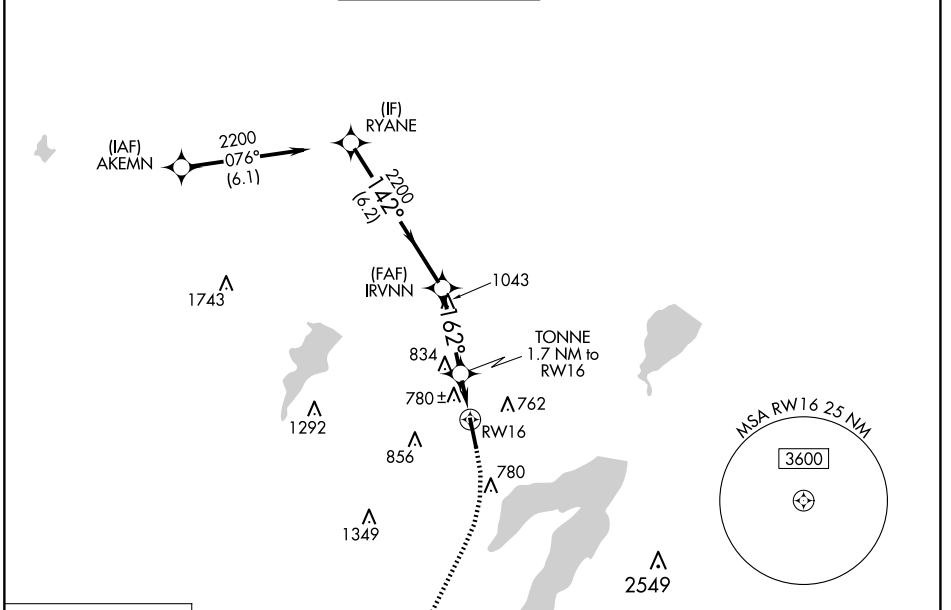
ARLINGTON MUNI (GKY)

RNP APCH - GPS.

▼ Rwy 16 helicopter visibility reduction below 3/4 SM NA. VDP NA when using Grand Prairie Muni altimeter setting. When local altimeter setting not received, use Grand Prairie Muni altimeter setting.

MISSED APPROACH: Climbing right turn to 3000 direct ZEXON and hold.

ASOS 127.375	LONE STAR APP CON 135.975 379.9	ARLINGTON TOWER ★ 128.625 (CTAF) 0	GND CON 121.875	CLNC DEL 121.875	CLNC DEL 118.85 <small>(When twr dosed)</small>
------------------------	---	--	---------------------------	----------------------------	--



CATEGORY	A	B	C	D
LNVA MDA	1040-1	412 (500-1)	1040-1 1/8 412 (500-1 1/8)	NA
CIRCLING	1100-1 472 (500-1)	1140-1 512 (600-1)	1220-1 1/2 592 (600-1 1/2)	NA

SC-2, 23 JAN 2025 to 20 FEB 2025

SC-2, 23 JAN 2025 to 20 FEB 2025