

# BLTWY SEVEN DEPARTURE (RNAV)

CTAF  
122.9  
HOUSTON DEP CON  
119.7 281.4

**TOP ALTITUDE:  
ASSIGNED BY ATC**

NOTE: RADAR required.  
NOTE: DME/DME/IRU or GPS required.  
NOTE: RNAV 1.

### TAKEOFF MINIMUMS

Rwys 16, 34: Standard with minimum climb  
of 500' per NM to 580.

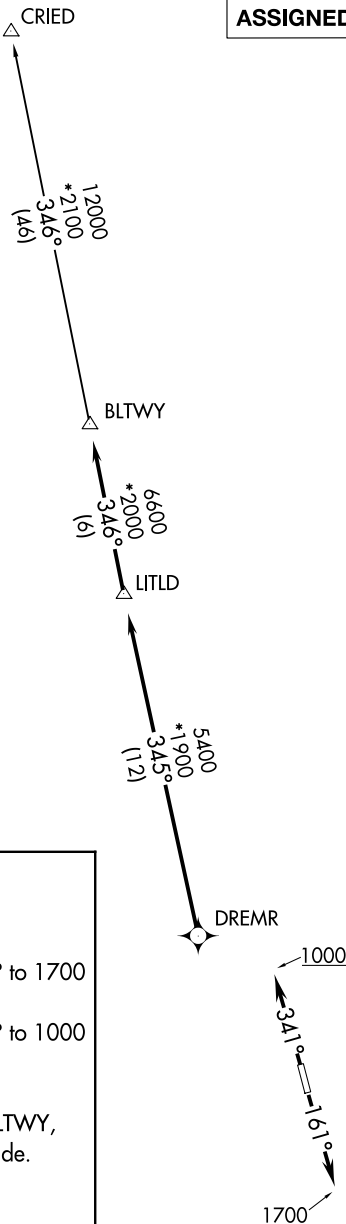
### DEPARTURE ROUTE DESCRIPTION

TAKEOFF RUNWAY 16: Climb on heading 161° to 1700  
for RADAR vectors to DREMR, thence . . . .

TAKEOFF RUNWAY 34: Climb on heading 341° to 1000  
for RADAR vectors to DREMR, thence . . . .

...on track 345° to LITLD, then on track 346° to BLTWY,  
then on (transition). Maintain ATC assigned altitude.  
Expect filed altitude 10 minutes after departure.

CRIED TRANSITION (BLTWY7.CRIED)



NOTE: Chart not to scale.

SC-5, 23 JAN 2025 to 20 FEB 2025

SC-5, 23 JAN 2025 to 20 FEB 2025