

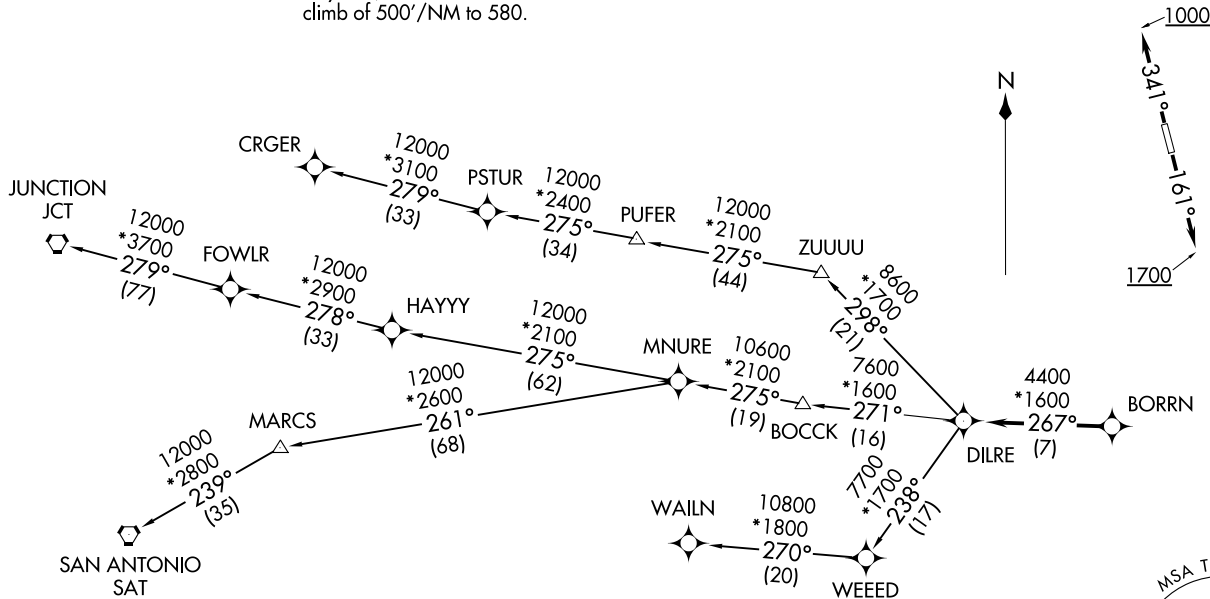
RNAV 1 - DME/DME/IRU or GPS.

RADAR required.

**TOP ALTITUDE:  
ASSIGNED BY ATC**

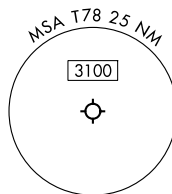
**TAKEOFF MINIMUMS**

Rwys 16, 34: Standard with minimum climb of 500'/NM to 580.



NOTE: CRGER-TRANSITION ATC assigned only for aircraft departing 54T, AXH, EFD, GLS, HPY, IWS, LBX, LVJ, SGR, TME, T00, T41.

(NARRATIVE ON FOLLOWING PAGE)



NOTE: Chart not to scale.

BORRN SIX DEPARTURE (RNAV)  
(BORRN6.BORRN) 30NOV23

LIBERTY, TEXAS  
LIBERTY MUNI (T78)

(BORRN6.BORRN) 23334  
BORRN SIX DEPARTURE (RNAV)

AL-5196 (FAA)

LIBERTY MUNI (T78)  
LIBERTY, TEXAS

# BORRN SIX DEPARTURE (RNAV)



## DEPARTURE ROUTE DESCRIPTION

TAKEOFF RUNWAY 16: Climb on heading 161° to 1700, for RADAR vectors to BORRN, thence. . . .

TAKEOFF RUNWAY 34: Climb on heading 341° to 1000, for RADAR vectors to BORRN, thence. . . .

. . . .on track 267° to DILRE, then on (transition). Maintain ATC assigned altitude. Expect filed altitude 10 minutes after departure.

CRGER TRANSITION (BORRN6.CRGER)

JUNCTION TRANSITION (BORRN6.JCT)

MNURE TRANSITION (BORRN6.MNURE)

SAN ANTONIO TRANSITION (BORRN6.SAT)

WAILN TRANSITION (BORRN6.WAILN)

SC-5, 23 JAN 2025 to 20 FEB 2025

SC-5, 23 JAN 2025 to 20 FEB 2025