

KARRR SEVEN DEPARTURE (RNAV)  
(KARRR7.KARRR) 29DEC22

LIBERTY, TEXAS  
LIBERTY MUNI (T78)

CTAF  
122.9  
HOUSTON DEP CON  
119.7 281.4

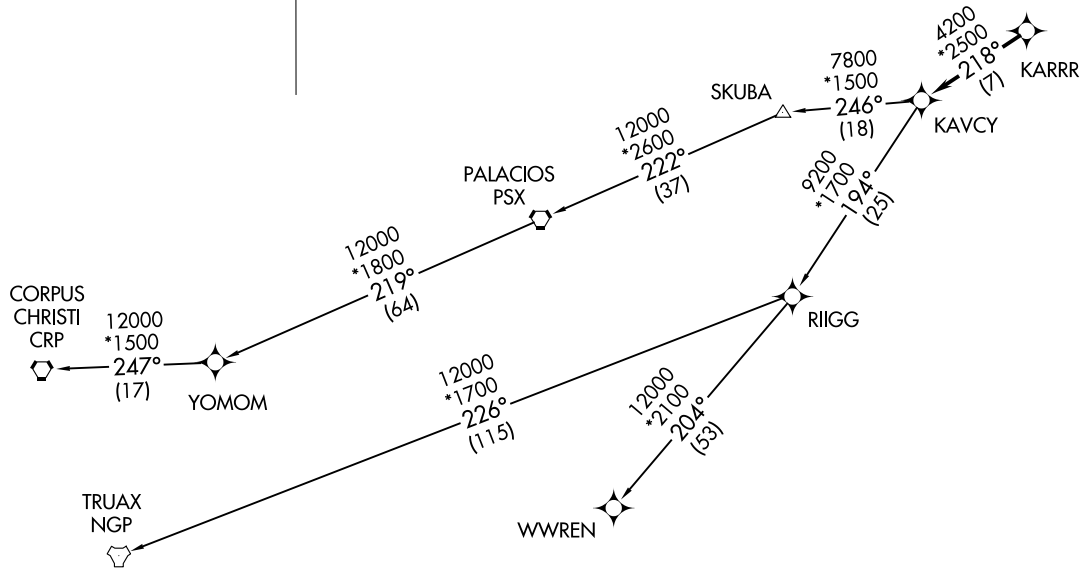
RNAV-1 DME/DME/IRU or GPS.

RADAR required.

TOP ALTITUDE:  
ASSIGNED BY ATC

TAKEOFF MINIMUMS

Rwys 16, 34: Standard with minimum climb of 500' per NM to 580.



(NARRATIVE ON FOLLOWING PAGE)

NOTE: Chart not to scale.

(KARRR7.KARRR) 22363  
KARRR SEVEN DEPARTURE (RNAV)

LIBERTY, TEXAS  
LIBERTY MUNI (T78)

AL-5196 (FAA)

# KARRR SEVEN DEPARTURE(RNAV)



## DEPARTURE ROUTE DESCRIPTION

TAKEOFF RUNWAY 16: Climb on heading 161° to 1700, for RADAR vectors to KARRR, thence. . . .

TAKEOFF RUNWAY 34: Climb on heading 341° to 1000, for RADAR vectors to KARRR, thence. . . .

. . . .on track 218° to KAVCY, then on (transition). Maintain ATC assigned altitude. Expect filed altitude 10 minutes after departure.

CORPUS CHRISTI TRANSITION (KARRR7.CRP)

PALACIOS TRANSITION (KARRR7.PSX)

TRUAX TRANSITION (KARRR7.NGP)

WWREN TRANSITION (KARRR7.WWREN)

YOMOM TRANSITIOIN (KARRR7.YOMOM)

SC-5, 23 JAN 2025 to 20 FEB 2025

SC-5, 23 JAN 2025 to 20 FEB 2025