

MMALT SEVEN DEPARTURE (RNAV)

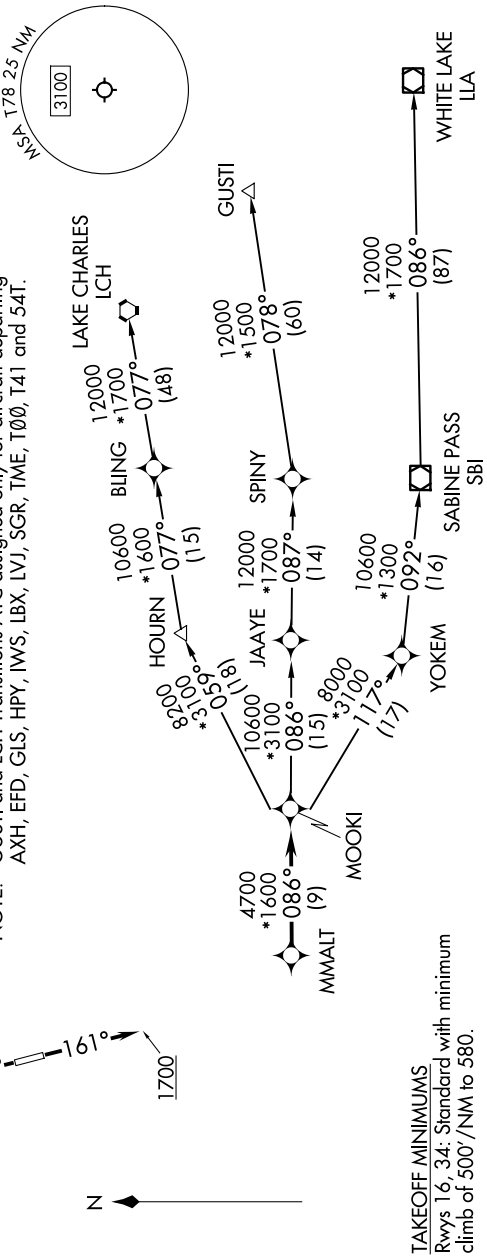
SC-5, 23 JAN 2025 to 20 FEB 2025

HOUSTON DEPCON
119.7 281.4
CTAF
122.9

RNAV 1 - DME/DME/IRU or GPS.
RADAR required.

NOTE: GUSTI and LCH Transitions ATC assigned only for aircraft departing AXH, EFD, GLS, HPY, IWS, IBX, LVJ, SGR, TME, T00, T41 and 54T.

TOP ALTITUDE:
ASSIGNED BY ATC



TAKEOFF MINIMUMS
Rwys 16, 34: Standard with minimum climb of 500'/NM to 580.

DEPARTURE ROUTE DESCRIPTION

TAKEOFF RUNWAY 16: Climb on heading 161° to 1700, for RADAR vectors to MMALT, thence. . . .
TAKEOFF RUNWAY 34: Climb on heading 341° to 1000, for RADAR vectors to MMALT, thence. . . .

. . . on track 086° to MOOKI, then on (transition). Maintain ATC assigned altitude.
Expect filed altitude 10 minutes after departure.

GUSTI TRANSITION (MMALT7.GUSTI)
LAKE CHARLES TRANSITION (MMALT7.LCH)
WHITE LAKE TRANSITION (MMALT7.LLA)

NOTE: Chart not to scale.

MMALT SEVEN DEPARTURE (RNAV)

SC-5, 23 JAN 2025 to 20 FEB 2025