

RADAR and DME required.

TOP ALTITUDE:  
ASSIGNED BY ATC



TAKEOFF MINIMUMS  
Rwys 16, 34: Standard.

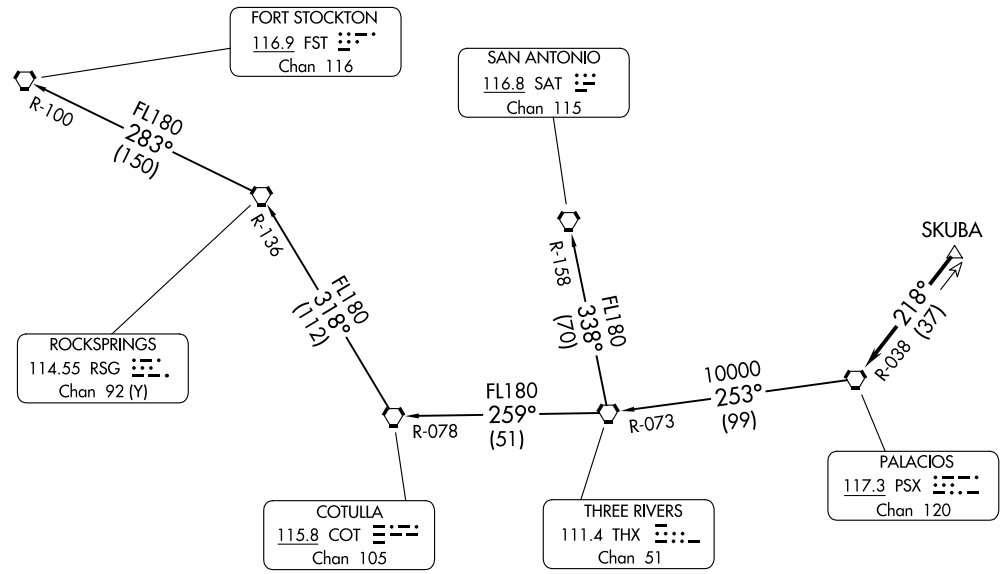
AWOS-3PT  
120.775  
CTAF  
122.9  
HOUSTON DEP CON  
119.7 281.4

PALACIOS THREE DEPARTURE  
(PSX3.PSX) 03NOV22

(PSX3.PSX) 24137  
PALACIOS THREE DEPARTURE

AL-5196 (FAA)

LIBERTY MUNI (T78)  
LIBERTY, TEXAS



NOTE: Chart not to scale.

(CONTINUED ON FOLLOWING PAGE)

LIBERTY, TEXAS  
LIBERTY MUNI (T78)

# PALACIOS THREE DEPARTURE



## DEPARTURE ROUTE DESCRIPTION

TAKEOFF RUNWAY 16: Climb on heading 161° to 1700 before turning, when entering controlled airspace, climb on assigned heading for RADAR vectors to SKUBA. Maintain ATC assigned altitude. Expect filed altitude 10 minutes after departure, thence. . . .

TAKEOFF RUNWAY 34: Climb on heading 341° to 1000 before turning, when entering controlled airspace, climb on assigned heading for RADAR vectors to SKUBA. Maintain ATC assigned altitude. Expect filed altitude 10 minutes after departure, thence. . . .

. . . .on PSX R-038 to PSX VORTAC.

FORT STOCKTON TRANSITION (PSX3.FST): From over PSX VORTAC on PSX R-253 and THX R-073 to THX VORTAC, then on THX R-259 and COT R-078 to COT VORTAC, then on COT R-318 and RSG R-136 to RSG VORTAC, then on RSG R-283 and FST R-100 to FST VORTAC.

SAN ANTONIO TRANSITION (PSX3.SAT): From over PSX VORTAC on PSX R-253 and THX R-073 to THX VORTAC, then on SAT R-158 to SAT VORTAC.

SC-5, 23 JAN 2025 to 20 FEB 2025

SC-5, 23 JAN 2025 to 20 FEB 2025