

WAAS CH 86610 W30A	APP CRS 304°	Rwy Idg TDZE 1024 Apt Elev 1024	4001
--	------------------------	---	-------------

RNAV (GPS) RWY 30

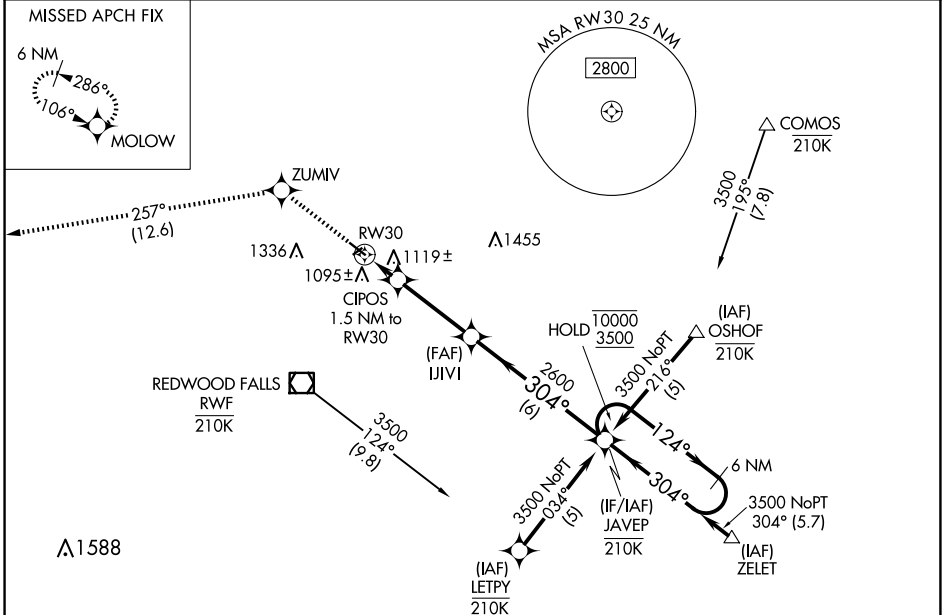
REDWOOD FALLS MUNI (RWF')

RNP APCH - GPS.

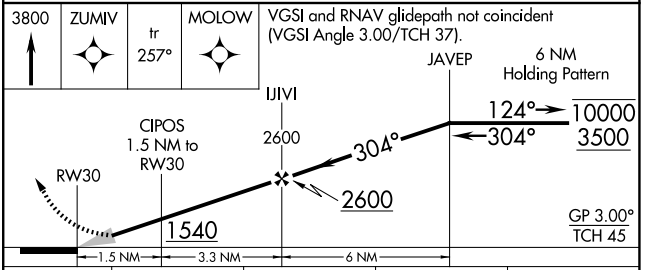
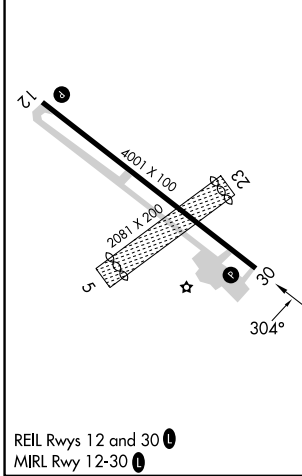
▼ Circling Rwy 5, 12 and 23 NA at night. For uncompensated
▲ Baro-VNAV systems, LNAV/VNAV NA below -21°C or above 54°C.

MISSED APPROACH: Climb to 3800 direct ZUMIV and on track 257° to MOLOW and hold.

ASOS 126.575	MINNEAPOLIS CENTER 127.1 290.2	UNICOM 123.0 (CTAF) 0
------------------------	--	---------------------------------



ELEV 1024	TDZE 1024
-----------	-----------



CATEGORY	A	B	C	D
LPV DA		1274- ³ / ₄	250 (300- ³ / ₄)	
LNAV/VNAV DA		1420-1 ¹ / ₈	396 (400-1 ¹ / ₈)	
LNAV MDA		1380-1	356 (400-1)	
CIRCLING	1480-1 456 (500-1)	1660-1 636 (700-1)	1700-2 676 (700-2)	1700-2 ¹ / ₄ 676 (700-2 ¹ / ₄)

NC-1, 23 JAN 2025 to 20 FEB 2025

NC-1, 23 JAN 2025 to 20 FEB 2025