

(RST1.RST) 23334

ROCHESTER ONE DEPARTURE

ANOKA COUNTY/BLAINE (JANES FLD) (A.N.E)

AL-5202 (FAA)

MINNEAPOLIS, MINNESOTA

MINNEAPOLIS DEP CON
 126.5 335.65
 ATIS
 120.625
 CLNC DEL
 121.3
 CLNC DEL
 121.85 (when twr closed)
 ANOKA TOWER★
 132.4



TOP ALTITUDE:
(JETS) 7000/
(PROPS) 5000

TAKEOFF MINIMUMS

Rwy 9: Standard with minimum climb of 341' per NM to 3000.
 Rwy 18: Standard with minimum climb of 371' per NM to 3000.
 Rwy 27: Standard with minimum climb of 260' per NM to 2800.
 Rwy 36: Standard with minimum climb of 259' per NM to 2800.

FLYING CLOUD
 117.7 FCM

 Chan 124

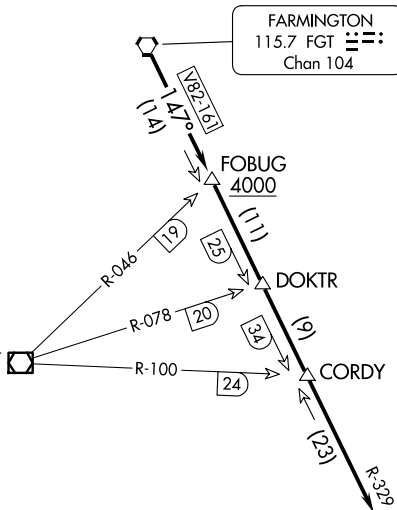
FARMINGTON
 115.7 FGT

 Chan 104

NOTE: RADAR required.

HALFWAY
 111.2 FOW

 Chan 49



DEPARTURE ROUTE DESCRIPTION

TAKEOFF ALL RUNWAYS: Fly assigned heading and altitude for RADAR vectors to FGT VORTAC then on FGT R-147 and RST R-329 to RST VOR/DME. Cross FOCUS INT/FGT 14 DME at or above 4000, thence

. . . .on assigned transition or assigned route. Expect clearance to filed altitude/flight level 10 (ten) minutes after departure.

WATERLOO TRANSITION (RST1.ALO): From over RST VOR/DME on RST R-168 and ALO R-353 to ALO VOR/DME.

NOTE: Chart not to scale.

ROCHESTER ONE DEPARTURE

(RST1.RST) 13SEP18

MINNEAPOLIS, MINNESOTA

ANOKA COUNTY/BLAINE (JANES FLD) (A.N.E)

NC-1, 23 JAN 2025 to 20 FEB 2025

NC-1, 23 JAN 2025 to 20 FEB 2025