

WAAS CH 62821 W10A	APP CRS 101°	Rwy Idg TDZE 1237 Apt Elev 1253
--	------------------------	---

RNAV (GPS) RWY 10

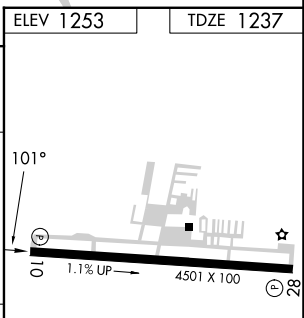
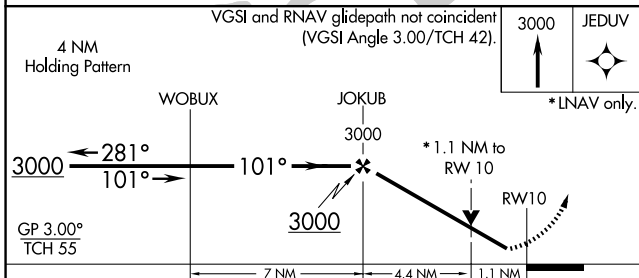
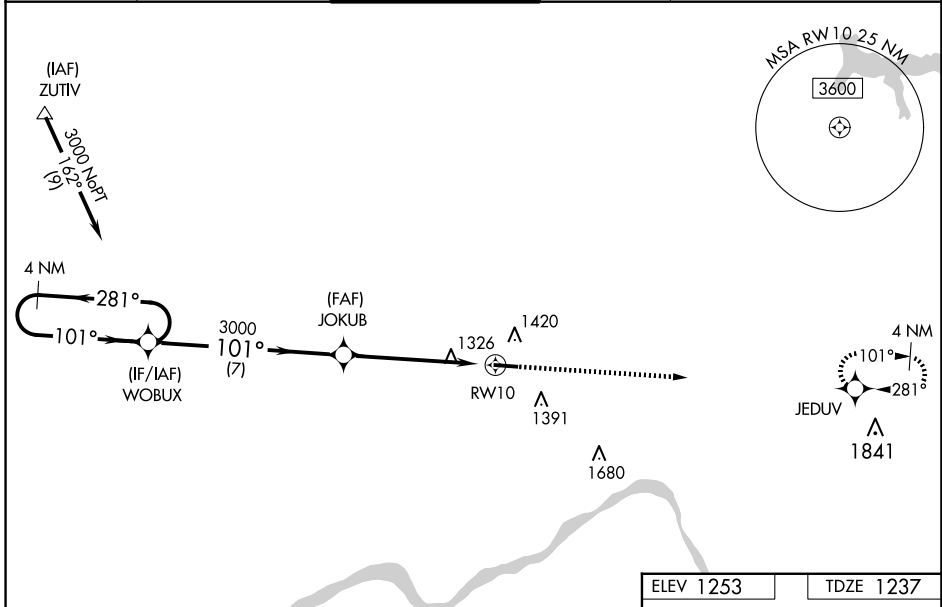
BEAVER COUNTY (BVI)

RNP APCH.

Baro-VNAV and VDP NA when using Pittsburgh Intl altimeter setting. For uncompensated Baro-VNAV systems, LNAV/VNAV NA below -17°C (2°F) or above 36°C (96°F). When local altimeter setting not received, use Pittsburgh Intl altimeter setting; increase all DA 50 feet; increase all MDAs 60 feet and visibility LNAV Cats C and D ½ SM. Circling Rwy 28 NA at night. Rwy 10 helicopter visibility reduction below ¾ SM NA.

MISSED APPROACH: Climb to 3000 direct JEDUV and hold.

ATIS 118.35	PITTSBURGH APP CON 124.75 338.2	BEAVER COUNTY TOWER* 120.3 (CTAF) 0	GND CON 121.8	CLNC DEL 124.85 (when twr closed)
-----------------------	---	---	-------------------------	--



CATEGORY	A	B	C	D
LPV DA		1528-1	290 (300-1)	
LNAV/VNAV DA		1514-1	276 (300-1)	
LNAV MDA		1580-1	342 (400-1)	
CIRCLING	1720-1	467 (500-1)	1720-1½ 467 (500-1½)	1820-2 567 (600-2)

NE-4, 23 JAN 2025 to 20 FEB 2025

NE-4, 23 JAN 2025 to 20 FEB 2025