

(TERPZ8.TERPZ) 24193

AL-5212 (FAA)

MONTGOMERY COUNTY AIRPARK (GAI)

TERPZ EIGHT DEPARTURE (RNAV)

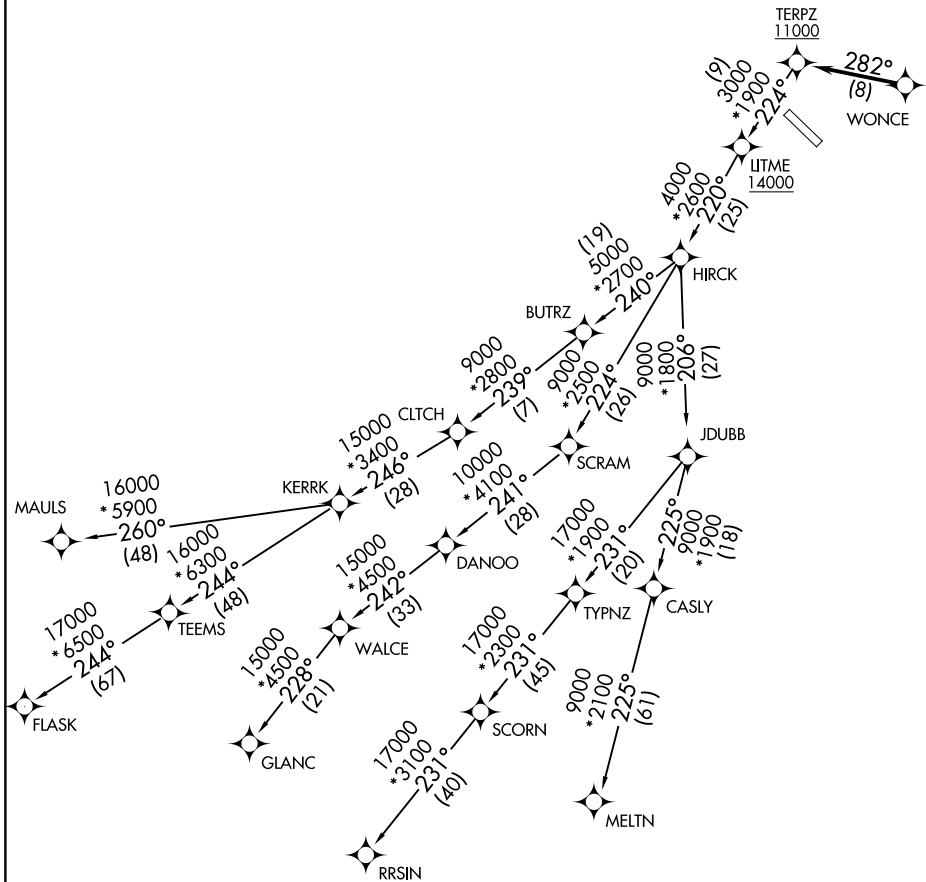
GAITHERSBURG, MARYLAND

POTOMAC DEP CON
 128.7 307.9
 AWOS-3PT
 128.275
 CLNC DEL
 121.6
 UNICOM
 123.075 (CTAF)

RNAV 1 - DME/DME/IRU or GPS.

RADAR required.

**TOP ALTITUDE:
 17000**



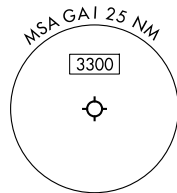
NE-3, 23 JAN 2025 to 20 FEB 2025

NE-3, 23 JAN 2025 to 20 FEB 2025

NOTE: Jet aircraft only.

TAKEOFF MINIMUMS:
 Rwy 14, 32: Standard.

NOTE: Chart not to scale.



TERPZ EIGHT DEPARTURE (RNAV)

GAITHERSBURG, MARYLAND

(TERPZ8.TERPZ) 11JUL24

MONTGOMERY COUNTY AIRPARK (GAI)



DEPARTURE ROUTE DESCRIPTION

Climb on assigned heading for RADAR vectors to WONCE, thence. . . .

. . . then on track 282° to cross TERPZ at or above 11000, then on assigned transition.
Maintain 17000, expect filed altitude 10 minutes after departure.

CLTCH TRANSITION (TERPZ8.CLTCH)

FLASK TRANSITION (TERPZ8.FLASK)

GLANC TRANSITION (TERPZ8.GLANC)

MAULS TRANSITION (TERPZ8.MAULS)

MELTN TRANSITION (TERPZ8.MELTN)

RRSIN TRANSITION (TERPZ8.RRSIN)

NE-3, 23 JAN 2025 to 20 FEB 2025

NE-3, 23 JAN 2025 to 20 FEB 2025