

WAAS CH <b>70624</b> W26A	APP CRS <b>259°</b>	Rwy Idg TDZE Apt Elev	<b>4151</b> <b>1005</b> <b>1014</b>
---------------------------------	------------------------	-----------------------------	---

# RNAV (GPS) RWY 26L

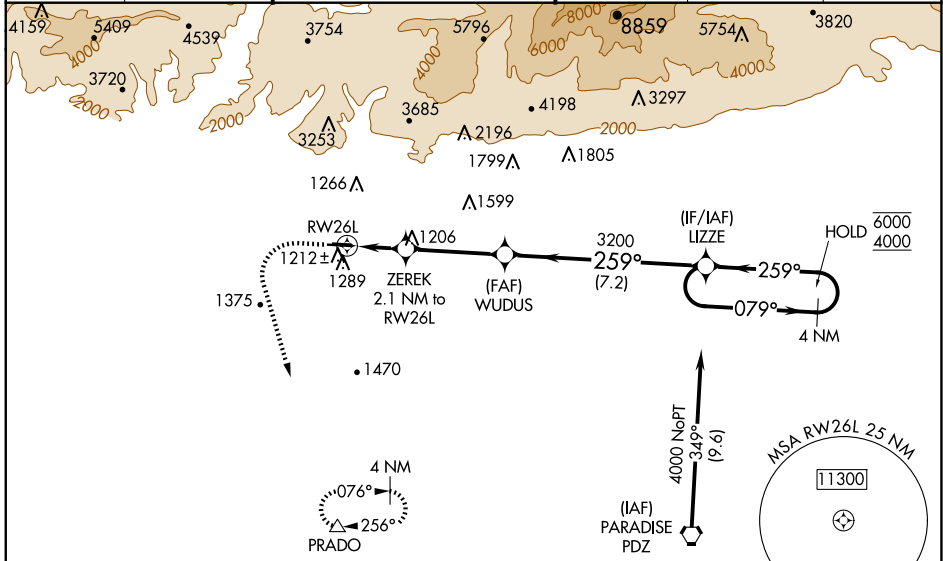
BRACKETT FLD (POC)

RNP APCH.

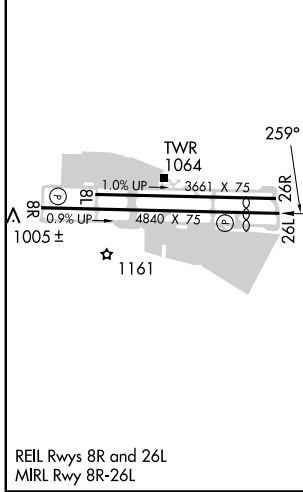
**⚠** Baro-VNAV and VDP NA when using Ontario altimeter setting. Rwy 26L helicopter visibility reduction below 3/4 SM NA. For uncompensated Baro-VNAV systems, LNAV/VNAV NA below -17°C or above 54°C. When local altimeter setting not received, use Ontario Intl altimeter setting and increase all DA 32 feet and all MDA 40 feet, increase LPV and LNAV/VNAV all Cats visibility 1/8 SM. Circling NA for Cat C north of Rwy 8L-26R. Circling to Rwy 8L NA at night. When Circling to Rwy 8R at night, operational VGSi required, remain on or above VGSi glidepath until threshold.

**⚠** MISSED APPROACH: Climb to 2100 then climbing left turn to 4000 direct PRADO and hold.

ATIS <b>124.4</b>	SOCAL APP CON <b>125.5 349.0</b>	BRACKETT TOWER★ RWY 8R/26L <b>118.2 (CTAF)</b>	RWY 8L/26R <b>133.3</b>	GND CON <b>125.0</b>	CLNC DEL <b>121.875</b>	UNICOM <b>122.95</b>
----------------------	-------------------------------------	--	----------------------------	-------------------------	----------------------------	-------------------------



ELEV 1014	TDZE 1005
-----------	-----------



2100	4000	PRADO	VGSi and RNAV glidepath not coincident (VGSi Angle 3.76/TCH 18).
*LNAV only		ZEREK 2.1 NM to RWY 26L	WUDUS 3200
*1.2 NM to RWY 26L		1840*	LIZZE 4 NM Holding Pattern
1.2 NM		0.9 NM	3.6 NM
			7.2 NM
			GP 3.56° TCH 58

CATEGORY	A	B	C	D
LPV DA	1305-7/8	300 (300-7/8)		NA
LNAV/VNAV DA	1444-1 1/4	439 (500-1 1/4)		NA
LNAV MDA	1500-1	495 (500-1)	1500-1 3/8 495 (500-1 3/8)	NA
<b>☑</b> CIRCLING	1680-1	666 (700-1)	1760-2 1/4 746 (800-2 1/4)	NA

SW-3, 23 JAN 2025 to 20 FEB 2025

SW-3, 23 JAN 2025 to 20 FEB 2025