

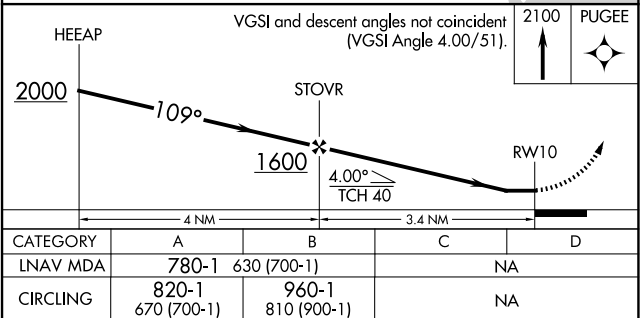
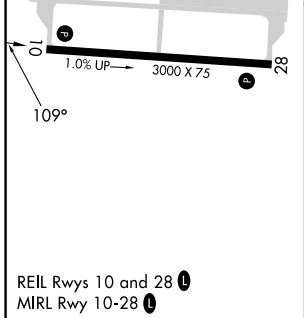
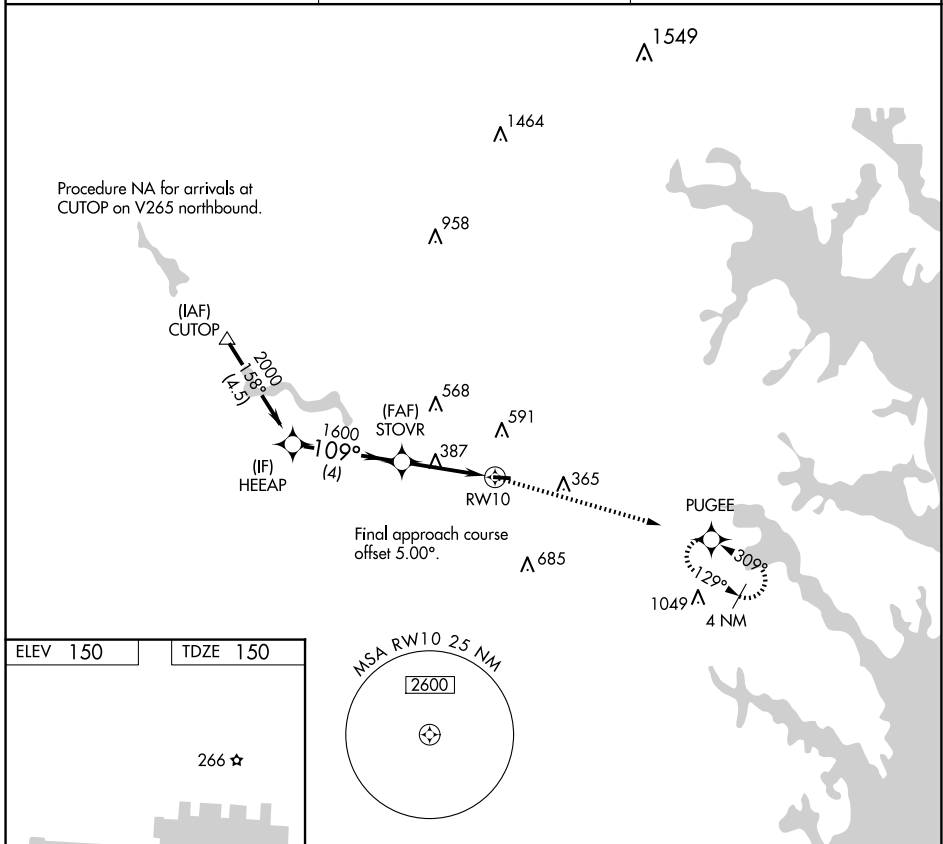
APP CRS	Rwy Idg	3000
109°	TDZE	150
	Apt Elev	150

RNAV (GPS) RWY 10

TIPTON (FME)

RNP APCH - GPS.		MISSED APPROACH: Climb to 2100 direct PUGEE and hold.
<p>▼ Rwy 10 helicopter visibility reduction below 1 SM NA. ▲ Straight-in Rwy 10 NA at night, Circling Rwy 10 NA at night.</p>		

AWOS-3 123.925	POTOMAC APP CON 119.7 290.475	UNICOM 123.05 (CTAF) 0
--------------------------	---	----------------------------------



NE-3, 23 JAN 2025 to 20 FEB 2025

NE-3, 23 JAN 2025 to 20 FEB 2025