

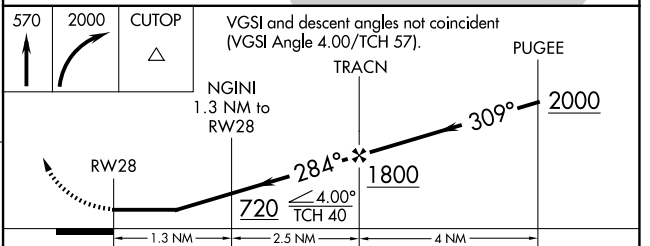
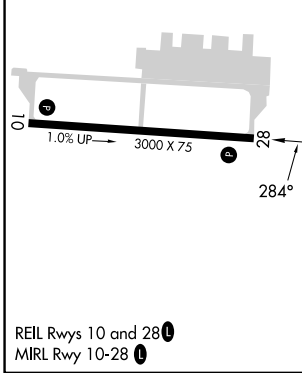
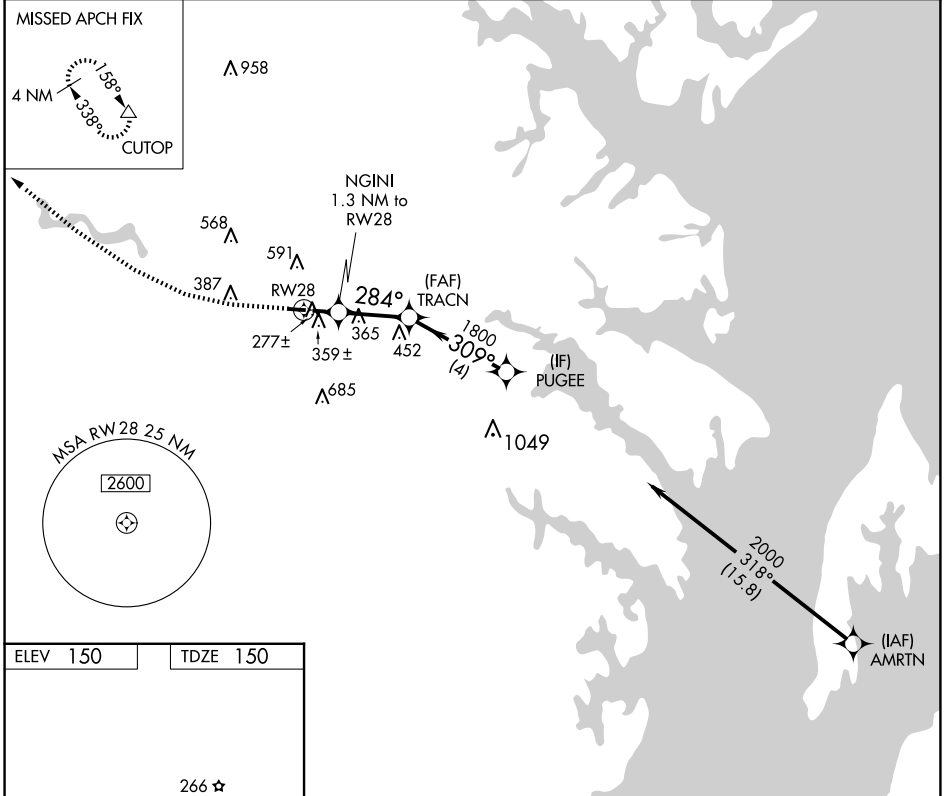
WAAS CH <b>56347</b> <b>W28A</b>	APP CRS <b>284°</b>	Rwy Idg <b>3000</b> TDZE <b>150</b> Apt Elev <b>150</b>
--	------------------------	---

# RNAV (GPS) RWY 28

TIPTON (FME)

RNP APCH - GPS.	MISSED APPROACH: Climb to 570 then climbing right turn to 2000 direct CUTOP and hold.
<p>▼ Rwy 28 helicopter visibility reduction below 3/4 SM NA. Circling Rwy 10 NA at night.</p> <p>▲</p>	

AWOS-3 <b>123.925</b>	POTOMAC APP CON <b>119.7 290.475</b>	UNICOM <b>123.05 (CTAF)</b> <b>0</b>
--------------------------	---	---



CATEGORY	A	B	C	D
LP MDA	540-1	390 (400-1)	NA	NA
LNAV MDA	620-1	470 (500-1)	NA	NA
CIRCLING	820-1 670 (700-1)	960-1 810 (900-1)	NA	NA

NE-3, 23 JAN 2025 to 20 FEB 2025

NE-3, 23 JAN 2025 to 20 FEB 2025