

WAAS CH <b>63038</b> <b>W36A</b>	APP CRS <b>356°</b>	Rwy Idg <b>5513</b> TDZE <b>1304</b> Apt Elev <b>1304</b>
--	------------------------	---

# RNAV (GPS) RWY 36

MITCHELL MUNI (MHE)

**⚠** For uncompensated Baro-VNAV systems, LNAV/VNAV NA below -21°C (-5°F) or above 54°C (130°F). DME/DME RNP-0.3 NA. When local altimeter setting not received, use Huron Rgnl altimeter setting and increase LPV DA to 1643, and LNAV/VNAV DA to 1697. Increase all MDA 100 feet. Increase LPV visibility, all Cats, to 1½ mile, LNAV/VNAV visibility, all Cats, and LNAV visibility Cats C/D to 3⁄8 mile and increase Circling Cat C visibility to 1⁄8 mile. Baro-VNAV and VDP NA when using Huron Rgnl altimeter setting.

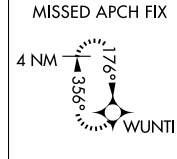
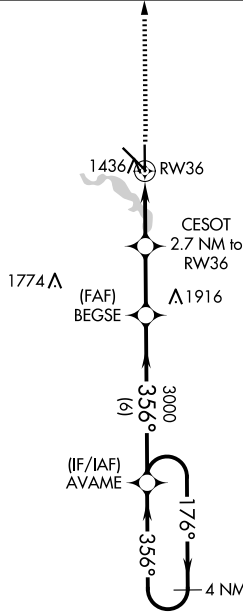
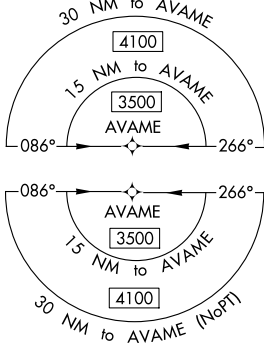
**MISSED APPROACH:**  
Climb to 3500 direct WUNTI and hold.

ASOS  
**124.175**

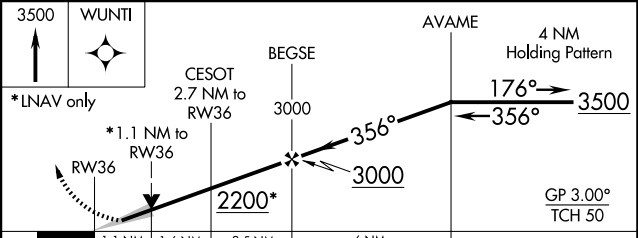
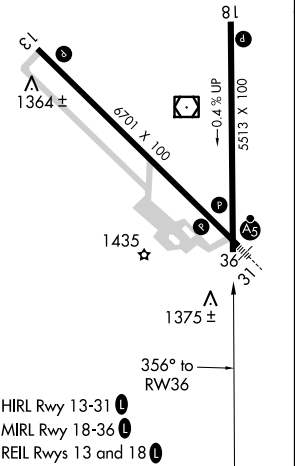
MINNEAPOLIS CENTER  
**126.25 339.8**

UNICOM  
**122.8 (CTAF) 0**

Δ 2514



ELEV 1304 TDZE 1304



CATEGORY	A	B	C	D
LPV DA		1554-1	250 (300-1)	
LNAV/VNAV DA		1608-1	304 (400-1)	
LNAV MDA	1700-1	396 (400-1)	1700-1½	396 (400-1½)
<b>C</b> CIRCLING	1740-1 436 (500-1)	1760-1 456 (500-1)	1820-1½ 516 (600-1½)	1860-2 556 (600-2)