

WAAS CH <b>57931</b> <b>W27A</b>	APP CRS <b>274°</b>	Rwy Idg TDZE Apt Elev	<b>4000</b> <b>1372</b> <b>1376</b>
--	------------------------	-----------------------------	---

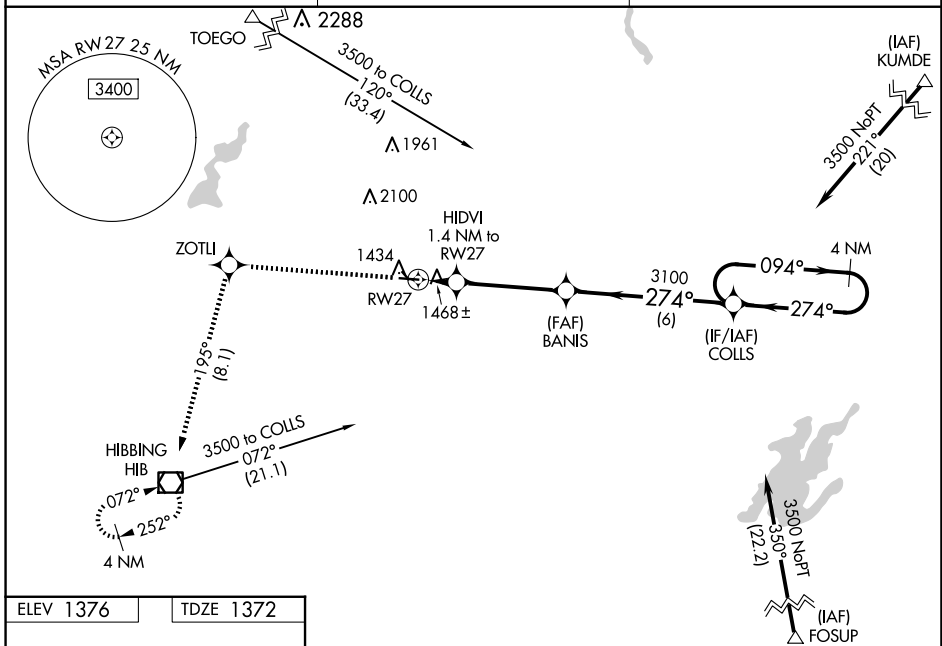
# RNAV (GPS) RWY 27

EVELETH/VIRGINIA MUNI (EVM)

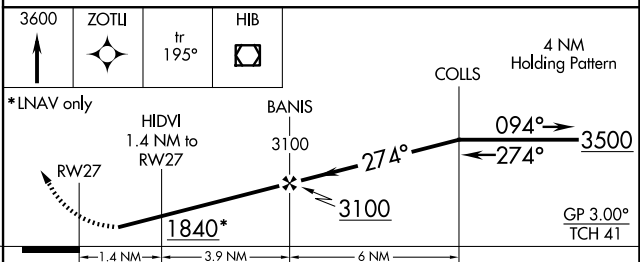
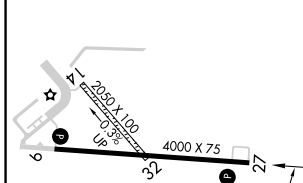
**⚠** Baro-VNAV NA when using Hibbing altimeter setting. For uncompensated Baro-VNAV systems, procedure NA below -17°C (2°F) or above 54°C (130°F). DME/DME RNP-0.3 NA. Circling to Rwy 14 and 32 NA. Rwy 27 helicopter visibility reduction below 3/4 SM NA. When local altimeter setting not received, use Hibbing altimeter setting and increase LPV DA to 1670 feet, increase LNAV/VNAV DA to 1687 feet; increase all MDAs 40 feet and increase LNAV Cat C/D visibility 1/8 SM.

**MISSED APPROACH:**  
Climb to 3600 direct ZOTLI and on track 195° to HIB VOR/DME and hold.

AWOS-3 <b>118.825</b>	DULUTH APP CON <b>125.45 233.7</b>	UNICOM <b>122.7 (CTAF) ①</b>
--------------------------	---------------------------------------	---------------------------------



ELEV 1376	TDZE 1372
-----------	-----------



CATEGORY	A	B	C	D
LPV DA		1634-1 1/8	262 (300-1 1/8)	
LNAV/VNAV DA		1651-1	279 (300-1)	
LNAV MDA		1720-1	348 (400-1)	
CIRCLING	1880-1 504 (600-1)	1940-1 564 (600-1)	2260-2 3/4 884 (900-2 3/4)	2460-3 1084 (1100-3)

MIRL Rwy 9-27 and 14-32 ①  
REIL Rwy 27 ①

NC-1, 23 JAN 2025 to 20 FEB 2025

NC-1, 23 JAN 2025 to 20 FEB 2025