


LOC/DME I-UNV <b>111.7</b> Chan 54	APP CRS <b>244°</b>	Rwy Idg TDZE Apt Elev	<b>6701</b> <b>1218</b> <b>1231</b>
--	------------------------	-----------------------------	---

# ILS or LOC RWY 24

STATE COLLEGE RGNL (UNV)

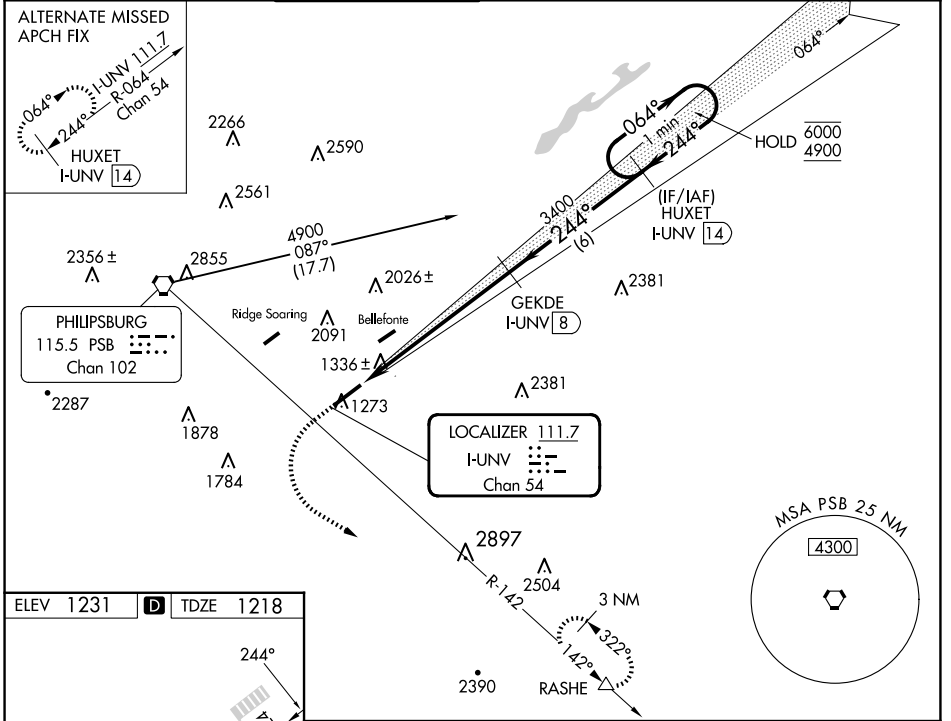
DME required.

**⚠** Circling NA northwest of Rwy 6-24.  
\* RVR 1800 authorized with use of FD or AP or HUD to DA (NA when using Clearfield altimeter setting).


MALSR 

MISSED APPROACH: Climb to 2600, then climbing left turn to 4100 on heading 112°, and PSB VORTAC R-142 to RASHE and hold.

D-ATIS <b>127.65</b>	NEW YORK CENTER <b>134.8 338.3</b>	UNIVERSITY PARK ★ <b>128.475</b> (CTAF) <b>0</b>	GND CON <b>125.725</b>	CLNC DEL <b>125.725</b>	CLNC DEL <b>118.55</b> (When twr closed)	UNICOM <b>122.95</b>
-------------------------	---------------------------------------	---	---------------------------	----------------------------	--	-------------------------



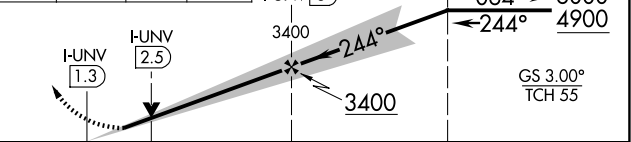
ELEV 1231	<b>D</b>	TDZE 1218
-----------	----------	-----------

TWR 

REIL Rwy 6 **0**  
HIRL Rwy 6-24 **0**

FAF to MAP 6.8 NM

Knots	60	90	120	150	180
Min:Sec	6:48	4:32	3:24	2:43	2:16

2600	4100	RASHE	HUXET I-UNV 14	One Minute Holding Pattern			
↑	hdg 112°	PSB R-142	△				
		GEKDE I-UNV 8					
<table border="1"> <tr> <td>1.2 NM</td> <td>5.5 NM</td> <td>6 NM</td> </tr> </table>		1.2 NM	5.5 NM	6 NM			
1.2 NM	5.5 NM	6 NM					
CATEGORY	A	B	C	D			
S-ILS 24 *	1418/24 200 (200-½)						
S-LOC 24	1640/24	422 (500-½)	1640/40	422 (500-¾)			
CIRCLING	1640-1 409 (500-1)	1700-1 469 (500-1)	1940-2 709 (800-2)	2560-3 1329 (1400-3)			

NE-4, 23 JAN 2025 to 20 FEB 2025

NE-4, 23 JAN 2025 to 20 FEB 2025