

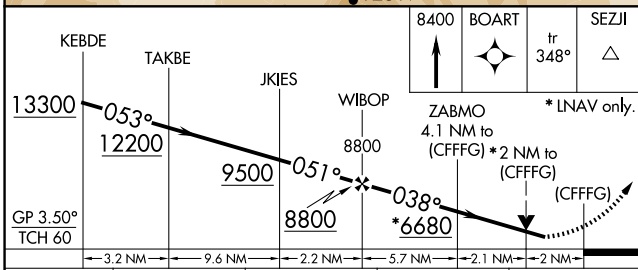
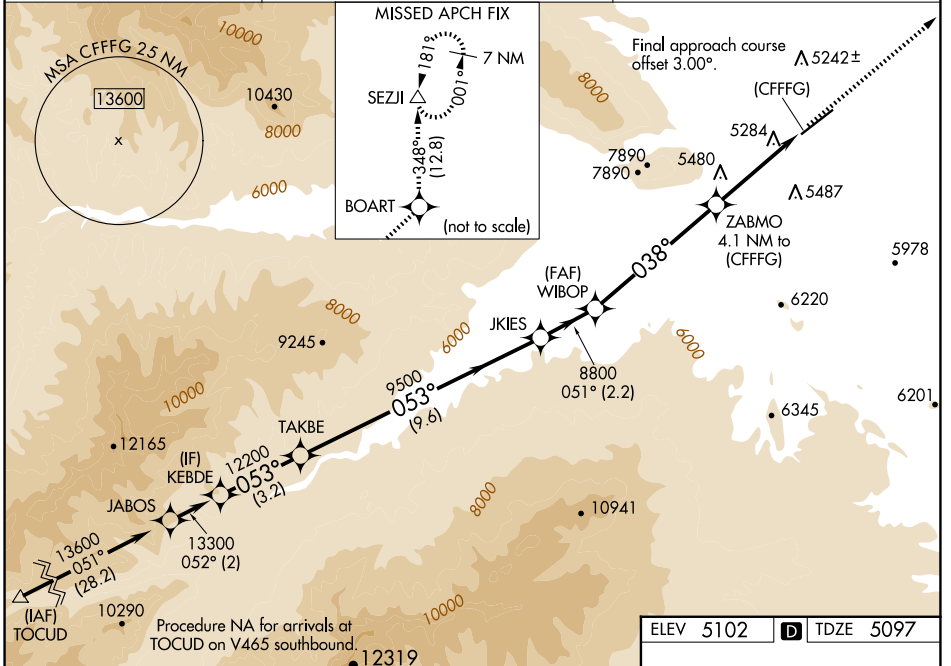
WAAS CH 45943 W04A	APP CRS 038°	Rwy ldg TDZE Apt Elev	7178 5097 5102
--	------------------------	-----------------------------	---

RNAV (GPS) RWY 4

YELLOWSTONE RGNL (COD)

RNP APCH.	MALSF	MISSED APPROACH: Climb to 8400 direct BOART and on track 348° to SEZJI and hold.
Rwy 4 helicopter visibility reduction below 3/4 SM NA. Baro-VNAV NA. -10°C		

AWOS-3PT 135.075	SALT LAKE CENTER 127.75 351.9	UNICOM 122.8 (CTAF)
----------------------------	---	-------------------------------



ELEV 5102	TDZE 5097						
<table border="1"> <tr> <td>8400</td> <td>BOART</td> <td>tr 348°</td> <td>SEZJI</td> </tr> </table>	8400	BOART	tr 348°	SEZJI	<p>ZABMO 4.1 NM to (CFFFG) * 2 NM to (CFFFG) (CFFFG)</p> <p>* LNAV only.</p>		
8400	BOART	tr 348°	SEZJI				
<table border="1"> <tr> <td>3.2 NM</td> <td>9.6 NM</td> <td>2.2 NM</td> <td>5.7 NM</td> <td>2.1 NM</td> <td>2 NM</td> </tr> </table>	3.2 NM	9.6 NM	2.2 NM	5.7 NM	2.1 NM	2 NM	HIRL Rwy 4-22 REL. Rwy 4 and 22
3.2 NM	9.6 NM	2.2 NM	5.7 NM	2.1 NM	2 NM		

CATEGORY	A	B	C	D
LPV DA	5792-2		695 (700-2)	
LNAV/VNAV DA	5891-2½		794 (800-2½)	
LNAV MDA	5920-1 823 (900-1)	5920-1¼ 823 (900-1¼)	5920-2½ 838 (900-2½)	823 (900-2½)
CIRCLING	5920-1¼ 818 (900-1¼)		5940-2½ 838 (900-2½)	7000-3 1898 (1900-3)

NW-1, 23 JAN 2025 to 20 FEB 2025

NW-1, 23 JAN 2025 to 20 FEB 2025