

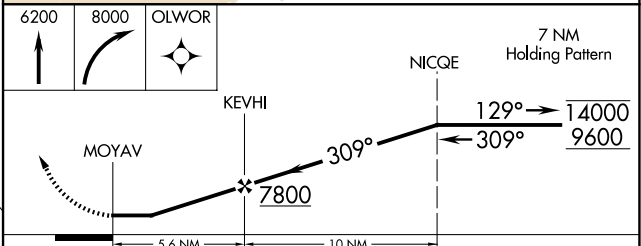
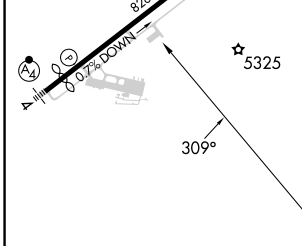
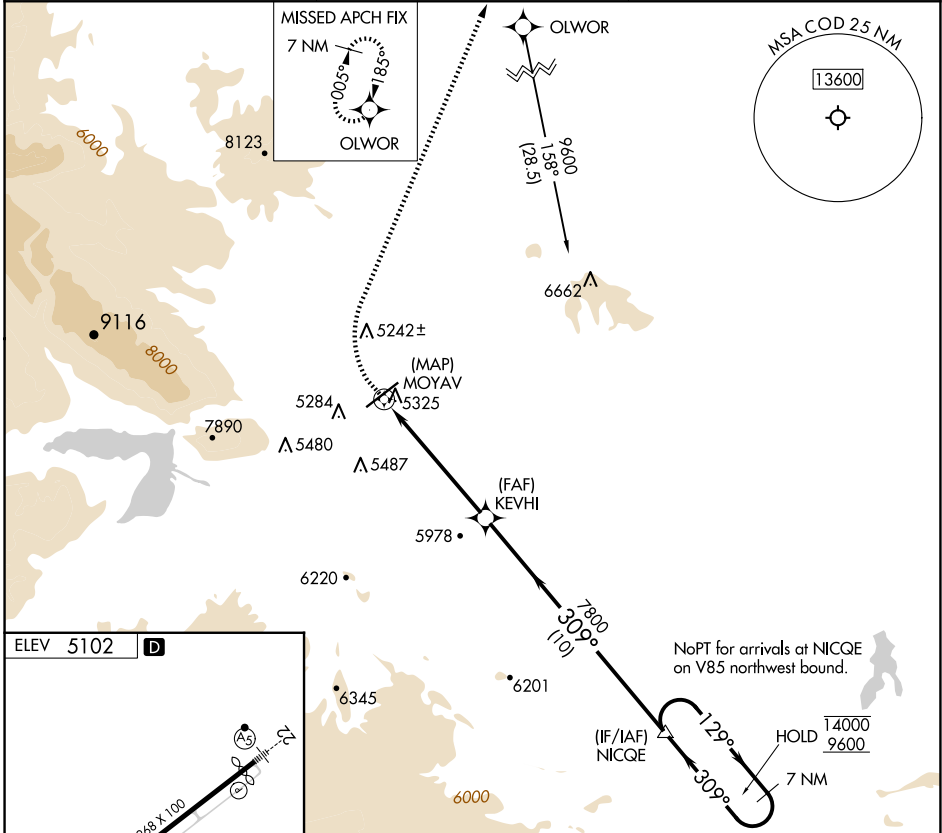
APP CRS 309°	Rwy Idg TDZE Apt Elev	N/A N/A 5102
------------------------	-----------------------------	-----------------------------------------

RNAV (GPS)-B

YELLOWSTONE RGNL (COD)

RNP APCH - GPS.	MISSED APPROACH: Climb to 6200 then climbing right turn to 8000 direct OLOWOR and hold.
-10°C	

AWOS-3PT 135.075	SALT LAKE CENTER 127.75 351.9	UNICOM 122.8 (CTAF)
----------------------------	-----------------------------------------	-------------------------------



REIL Rwys 4 and 22				
HIRL Rwy 4-22				
CIRCLING	6200-1¼ 1098 (1100-1¼)	6200-1½ 1098 (1100-1½)	6200-3 1098 (1100-3)	7000-3 1898 (1900-3)

NW-1, 23 JAN 2025 to 20 FEB 2025

NW-1, 23 JAN 2025 to 20 FEB 2025