

APP CRS	Rwy Idg	<b>5488</b>
<b>104°</b>	TDZE	<b>27</b>
	Apt Elev	<b>28</b>

# RNAV (GPS) RWY 12

MERCEDITA (PSE) (TJPS)

RNP APCH-GPS.

**NA** Obtain local altimeter setting on CTAF; when not received use Luis Munoz Marin Intl altimeter setting. Procedure NA at night. Rwy 12, 30 helicopter visibility reduction below 1 SM NA. Circling NA for Cats C and D northeast of Rwy 12-30.

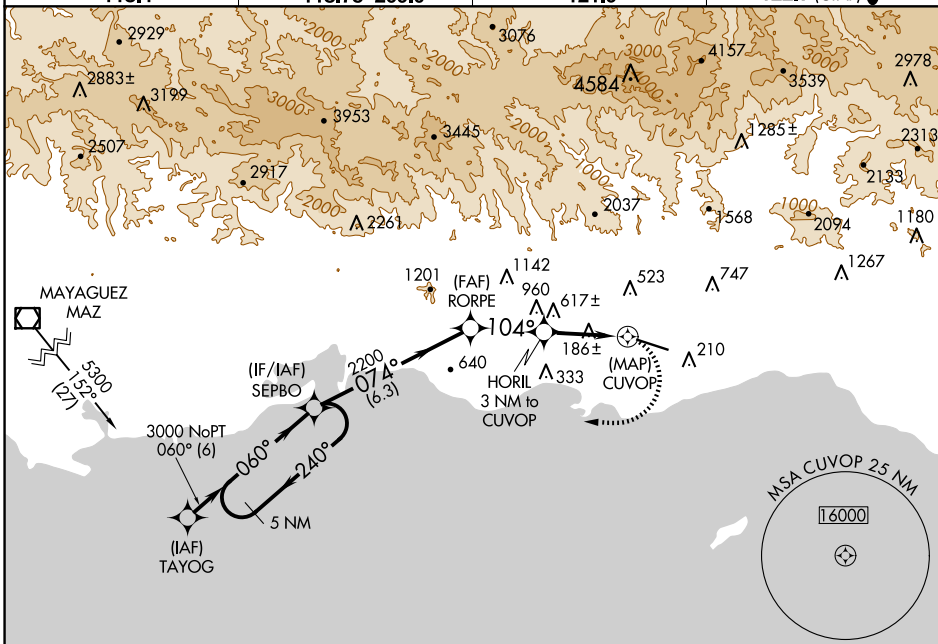
**MISSED APPROACH:** Climbing right turn to 3000 direct SEPBO and hold.

AWOS-3PT  
**118.4**

SAN JUAN CENTER  
**118.75 269.0**

CLNC DEL  
**121.9**

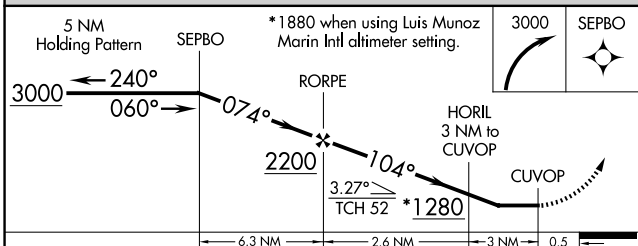
UNICOM  
**122.7 (CTAF) 0**



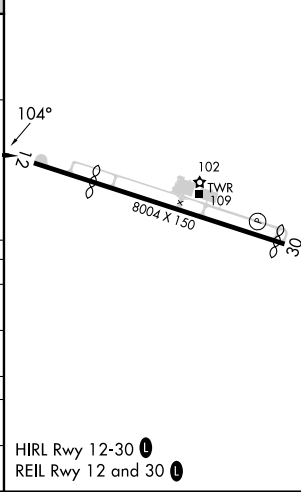
SE-3, 23 JAN 2025 to 20 FEB 2025

SE-3, 23 JAN 2025 to 20 FEB 2025

ELEV	<b>28</b>	D	TDZE	<b>27</b>
------	-----------	---	------	-----------



CATEGORY	A	B	C	D
LNVA MDA	880-1 853 (900-1)	880-1¼ 853 (900-1¼)	880-2½ 853 (900-2½)	880-2¾ 853 (900-2¾)
CIRCLING	880-1¼ 852 (900-1¼)	852 (900-1¼)	880-2½ 852 (900-2½)	1040-3 1012 (1100-3)
LUIS MUNOZ MARIN INTL ALTIMETER SETTING MINIMUMS				
LNVA MDA	NA			
CIRCLING	1480-1¼ 1452 (1500-1¼)	1480-1½ 1452 (1500-1½)	1480-3 1452 (1500-3)	1640-3 1612 (1700-3)



HIRL Rwy 12-30 0  
REIL Rwy 12 and 30 0