

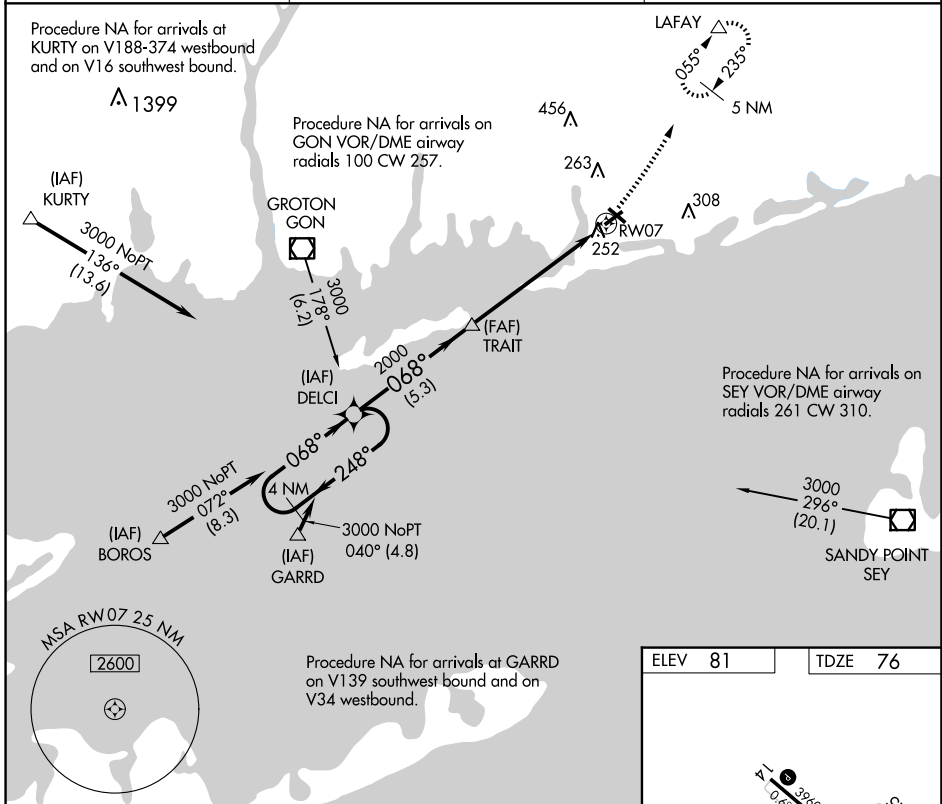
APP CRS 068°	Rwy Idg TDZE Apt Elev	4010 76 81
------------------------	-----------------------------	---------------------------------------

RNAV (GPS) RWY 7

WESTERLY STATE (WST)

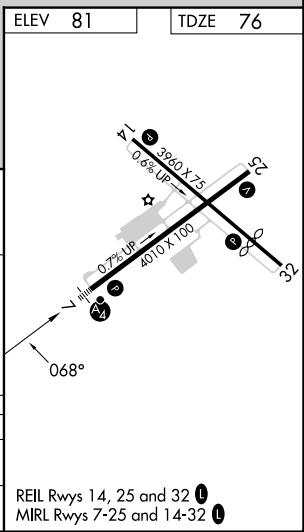
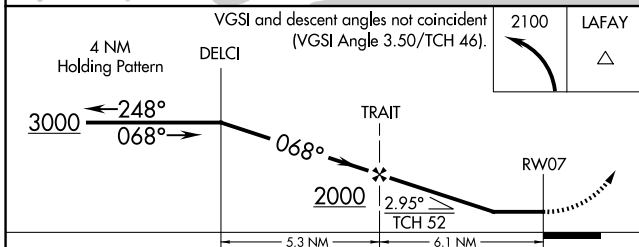
▼ Inoperative table does not apply. DME/DME RNP-0.3 NA. ▲ NA	MALSF 	MISSED APPROACH: Climbing left turn to 2100 direct LAFAY and hold.
---	------------------	---

ASOS 132.375	PROVIDENCE APP CON * 119.45 319.2	UNICOM 123.0 (CTAF) 0
-------------------------------	--	--



NE-1, 23 JAN 2025 to 20 FEB 2025

NE-1, 23 JAN 2025 to 20 FEB 2025



CATEGORY	A	B	C	D
RNAV MDA	520-1 444 (500-1)	520-1½ 444 (500-1½)	520-1¼ 444 (500-1¼)	520-1½ 444 (500-1½)
CIRCLING	580-1 499 (500-1)	720-1¾ 639 (700-1¾)	760-2¼ 679 (700-2¼)	

REIL Rwy 14, 25 and 32
MRL Rwy 7-25 and 14-32