

TOP ALTITUDE:  
3000



NE-3, 23 JAN 2025 to 20 FEB 2025

POTOMAC DEP CON  
120.45 306.925  
AWOS-3  
124.85  
CLNC DEL  
126.15  
UNICOM  
122.975 (CTAF)

**DEPARTURE ROUTE DESCRIPTION**

Climb on heading assigned by ATC, expect RADAR vectors to BUTRZ, then on track 239° to CLTCH, thence. . . .

. . . on assigned transition, maintain altitude assigned by ATC, expect clearance to filed altitude within ten (10) minutes after departure.

FLASK TRANSITION (CLTCH3.FLASK)  
MAULS TRANSITION (CLTCH3.MAULS)

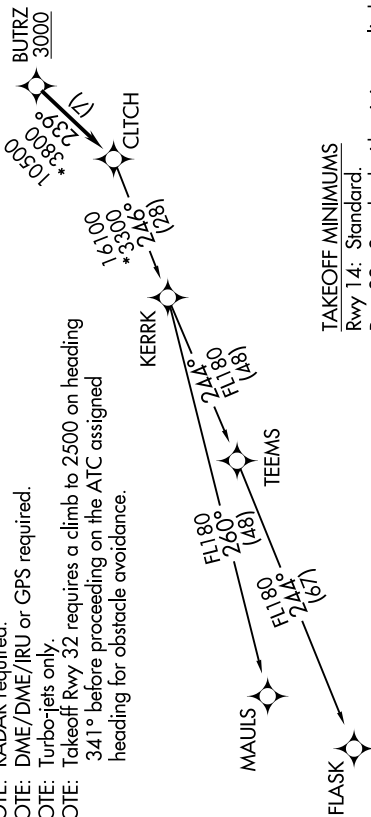
NOTE: RNAV 1.

NOTE: RADAR required.

NOTE: DME/DME/IRU or GPS required.

NOTE: Turbojets only.

NOTE: Takeoff Rwy 32 requires a climb to 2500 on heading 341° before proceeding on the ATC assigned heading for obstacle avoidance.



TAKEOFF MINIMUMS

Rwy 14: Standard.

Rwy 32: Standard with minimum climb of 240' per NM to 1900.

NOTE: Chart not to scale.

NE-3, 23 JAN 2025 to 20 FEB 2025