

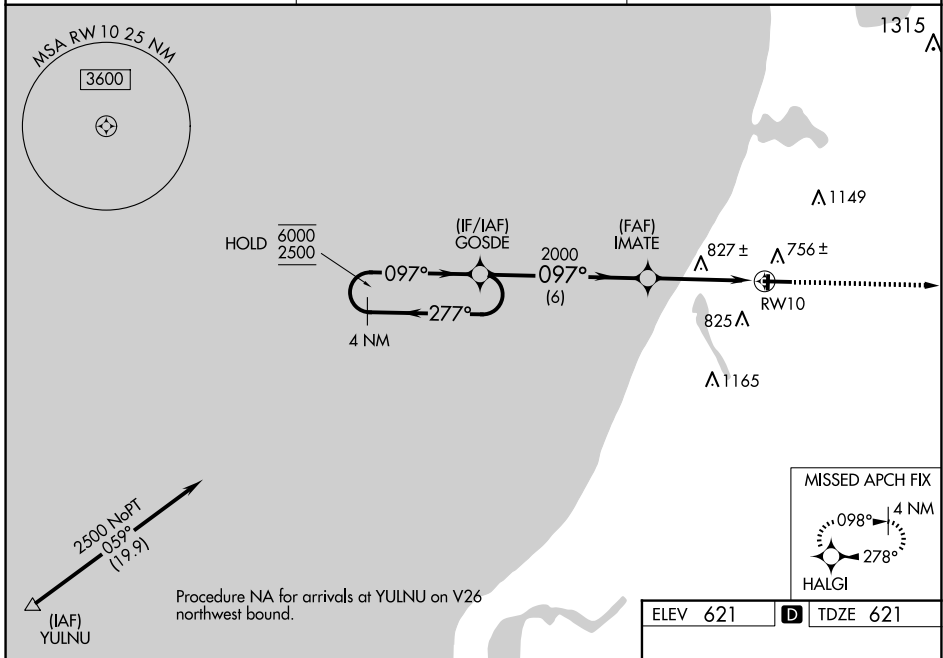
WAAS CH 60933 W10A	APP CRS 097°	Rwy Idg 5501 TDZE 621 Apt Elev 621
--	------------------------	---

RNAV (GPS) RWY 10

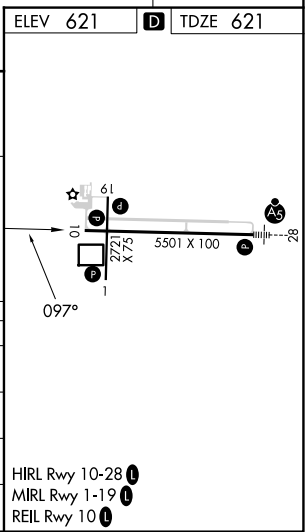
MANISTEE COUNTY/BLACKER (MBL)

RNP APCH - GPS.		MISSED APPROACH: Climb to 3000 direct HALGI and hold.
<p>⚠ Circling Rwy 1, 19 NA at night. Rwy 10 helicopter visibility reduction below 3/4 SM NA. For uncompensated Baro-VNAV systems, LNAV/VNAV NA below -16°C or above 54°C.</p>		

AWOS-3PT 118.825	MINNEAPOLIS CENTER 120.85 322.35	UNICOM 122.8 (CTAF) Ⓛ
----------------------------	--	---------------------------------



4 NM Holding Pattern		VGSI and RNAV glidepath not coincident (VGSI Angle 3.00/TCH 30).		3000	HALGI
6000 ← 277°		GOSDE		IMATE	RW10
2500 → 097°		2000			
GP 3.00° TCH 53		097°		1.4 NM to RW10	
		2000		RW10	
		6 NM		2.8 NM	
				1.4 NM	
CATEGORY	A	B	C	D	
LPV DA		890-7/8	269 (300-7/8)		
LNAV/VNAV DA		1091-13/8	470 (500-13/8)		
LNAV MDA	1080-1	459 (500-1)	1080-13/8	459 (500-13/8)	
CIRCLING	1160-1 539 (600-1)	1220-1 599 (600-1)	1400-21/4 779 (800-21/4)	1500-23/4 879 (900-23/4)	



EC-1, 23 JAN 2025 to 20 FEB 2025

EC-1, 23 JAN 2025 to 20 FEB 2025