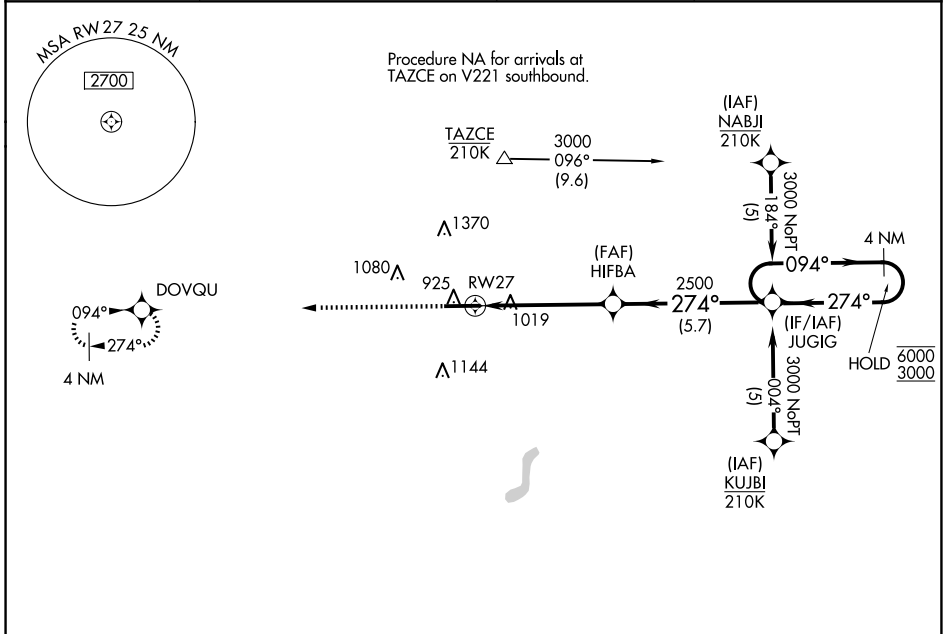


| | | |
|--|------------------------|---|
| WAAS CH 86401 W27A | APP CRS 274° | Rwy Idg 6355 TDZE 881 Apt Elev 881 |
|--|------------------------|---|

RNAV (GPS) RWY 27

DE KALB COUNTY (GWB)

| | | | |
|--|--|--------------------------|---|
| RNP APCH - GPS. | | MALSRS | MISSED APPROACH: Climb to 3000 direct DOVQU and hold. |
| For uncompensated Baro-VNAV systems, LNAV/VNAV NA below -16°C or above 54°C. | | | |
| AWOS-3P 124.15 | FORT WAYNE APP CON 127.2 284.6 | CLNC DEL 126.6 | UNICOM 123.0 (CTAF) |



| | | | | |
|--|--|---|------------------------------------|------------------------------------|
| ELEV 881 | TDZE 881 | 1648 | | |
| | | | | |
| CATEGORY LPV DA LNAV/VNAV DA LNAV MDA CIRCLING | A 1081-1/2 1314-3/4 1320-1/2 439 (500-1) | B 200 (200-1/2) 433 (500-3/4) 439 (500-1/2) 679 (700-1) | C 1720-2 1/2 839 (900-2 1/2) | D 1720-2 3/4 839 (900-2 3/4) |

EC-2, 23 JAN 2025 to 20 FEB 2025

EC-2, 23 JAN 2025 to 20 FEB 2025