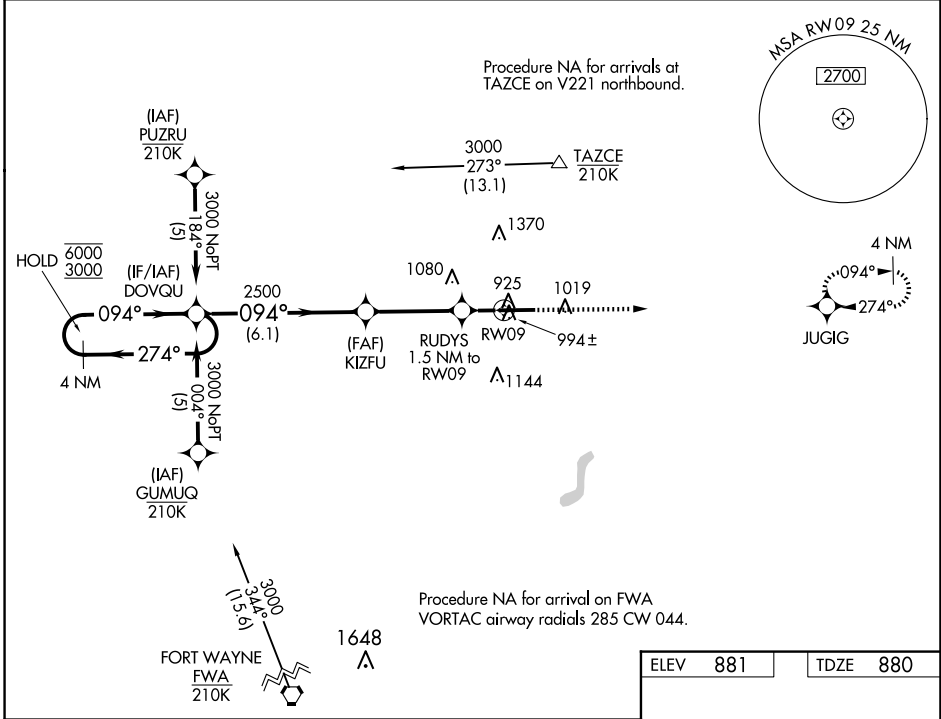


WAAS CH <b>40201</b> <b>W09A</b>	APP CRS <b>094°</b>	Rwy Idg <b>6405</b> TDZE <b>880</b> Apt Elev <b>881</b>
--	------------------------	---

# RNAV (GPS) RWY 9

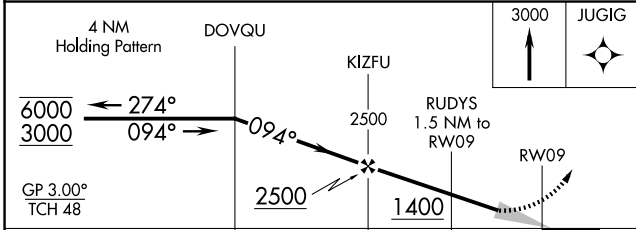
DE KALB COUNTY (GWB)

RNP APCH - GPS.		MISSED APPROACH: Climb to 3000 direct JUGIG and hold.	
AWOS-3P <b>124.15</b>	FORT WAYNE APP CON <b>127.2 284.6</b>	CLNC DEL <b>126.6</b>	UNICOM <b>123.0 (CTAF) 0</b>



EC-2, 23 JAN 2025 to 20 FEB 2025

EC-2, 23 JAN 2025 to 20 FEB 2025



ELEV	881	TDZE	880
------	-----	------	-----

3000	JUGIG
------	-------

CATEGORY	A	B	C	D
LPV DA		1130-3/4	250 (300-3/4)	
LNAV/VNAV DA		1155-7/8	275 (300-7/8)	
LNAV MDA		1260-1	380 (400-1)	
CIRCLING	1320-1 439 (500-1)	1560-1 679 (700-1)	1720-2 1/2 839 (900-2 1/2)	1720-2 3/4 839 (900-2 3/4)

REIL Rwys 9 and 27 0  
MIRL Rwy 9-27 0