

WAAS CH <b>86731</b> <b>W34A</b>	APP CRS <b>345°</b>	Rwy Idg TDZE <b>620</b> Apt Elev <b>630</b>	<b>4398</b>
----------------------------------------	------------------------	---------------------------------------------------	-------------

# RNAV (GPS) RWY 34

GREATER KANKAKEE (IKK)

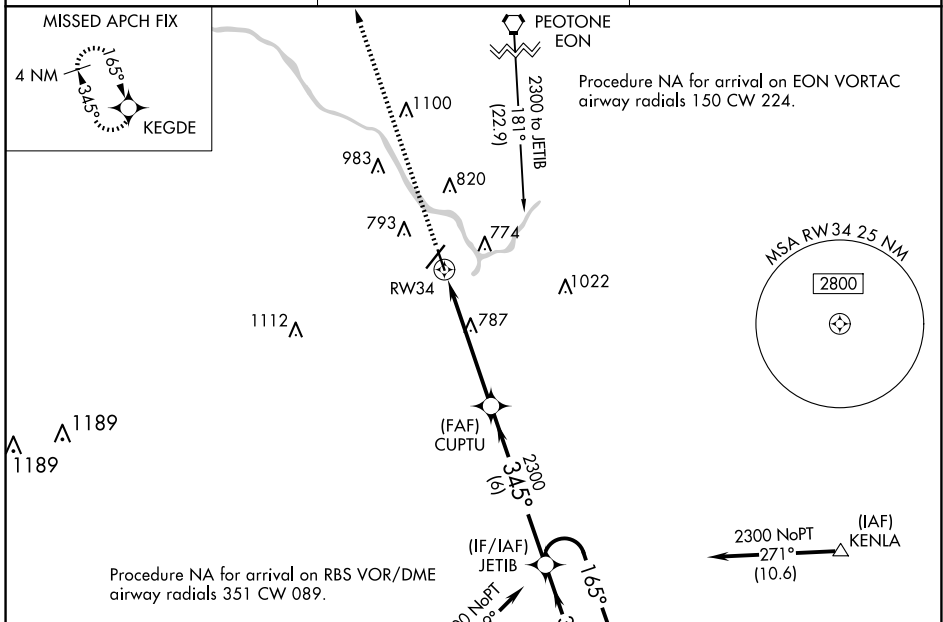
RNP APCH.  
 ▼ Rwy 34 helicopter visibility reduction below 1 SM NA. For uncompensated Baro-VNAV systems, LNAV/VNAV NA below -16° C or above 54° C.  
 ▲ Straight-in and Circling Rwy 34 NA at night, Circling Rwy 16 NA at night.

MISSED APPROACH: Climb to 2300 direct KEGDE and hold.

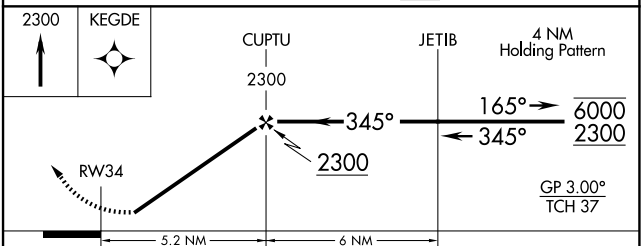
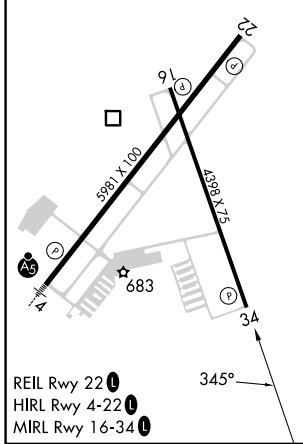
AWOS-3  
**128.475**

CHICAGO CENTER  
**132.5 284.7**

UNICOM  
**123.0 (CTAF)**



ELEV 630	TDZE 620
----------	----------



CATEGORY	A	B	C	D
LPV DA		870-1	250 (300-1)	
LNAV/VNAV DA		885-1	265 (300-1)	
LNAV MDA	1040-1	420 (500-1)	1040-1½ 420 (500-1½)	
☑ CIRCLING	1080-1 450 (500-1)	1100-1 470 (500-1)	1140-1½ 510 (600-1½)	1340-2½ 710 (800-2½)

EC-3, 23 JAN 2025 to 20 FEB 2025

EC-3, 23 JAN 2025 to 20 FEB 2025