

WAAS CH 58130 W10A	APP CRS 099°	Rwy Idg TDZE 1892 Apt Elev 1892	3597
--	------------------------	---	-------------

RNAV (GPS) RWY 10

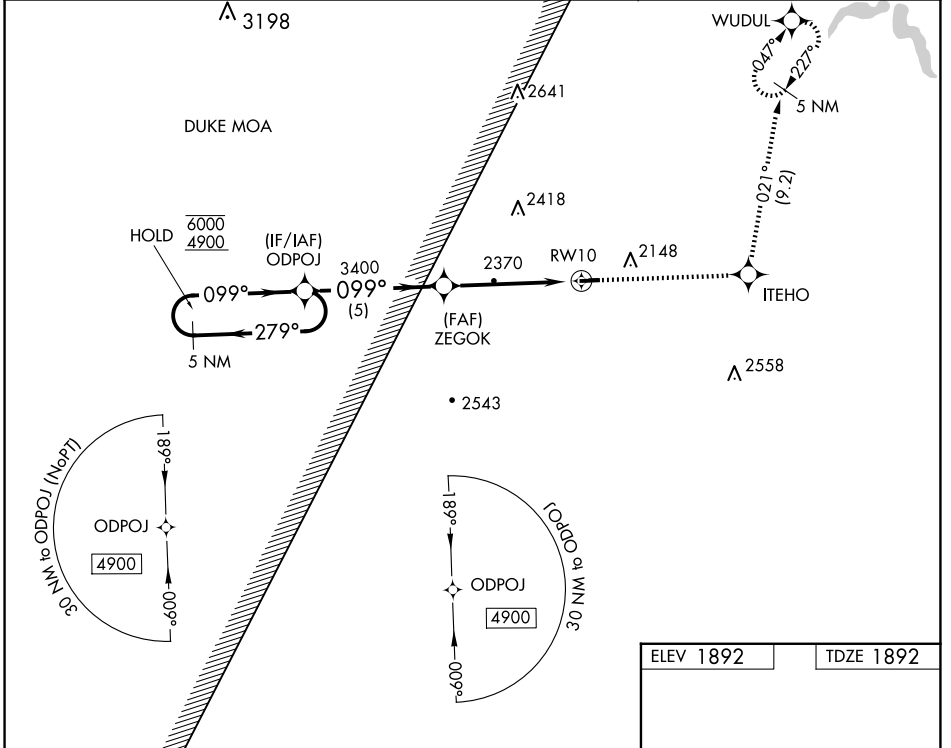
GRAND CANYON RGNL (N38)

RNP APCH.

▼ Circling NA to Rws 11 and 29. Procedure NA at night.
▲ Rwy 10 helicopter visibility reduction below 1 SM NA.

MISSED APPROACH: Climb to 4500 direct ITEHO and on track 021° to WUDUL and hold.

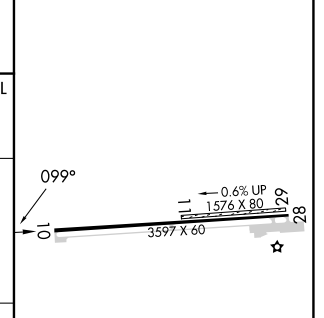
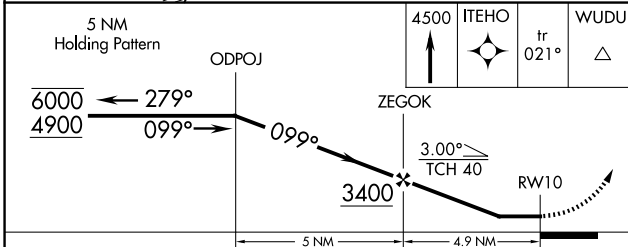
AWOS-3PT 120.925	ELMIRA APP CON ★ 128.425 257.8	UNICOM 122.8 (CTAF) 0
----------------------------	--	--



NE-4, 23 JAN 2025 to 20 FEB 2025

NE-4, 23 JAN 2025 to 20 FEB 2025

ELEV 1892	TDZE 1892
-----------	-----------



CATEGORY	A	B	C	D
LP MDA	2760-1 868 (900-1)	2760-1¼ 868 (900-1¼)	2760-2½ 868 (900-2½)	NA
LNAV MDA	2760-1 868 (900-1)	2760-1¼ 868 (900-1¼)	2760-2½ 868 (900-2½)	NA
C CIRCLING	2760-1¼ 868 (900-1¼)	2760-2½ 868 (900-2½)	2760-2½ 868 (900-2½)	NA

MIRL Rwy 10-28 **0**
REIL Rwy 28 **0**