

LOC I-MTW <b>111.3</b>	APP CRS <b>172°</b>	Rwy Idg TDZE Apt Elev	<b>5001</b> <b>651</b> <b>651</b>
---------------------------	------------------------	-----------------------------	---

# ILS or LOC RWY 17

MANITOWOC COUNTY (MTW)

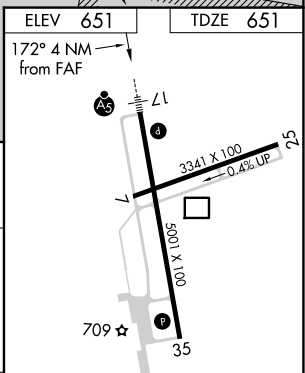
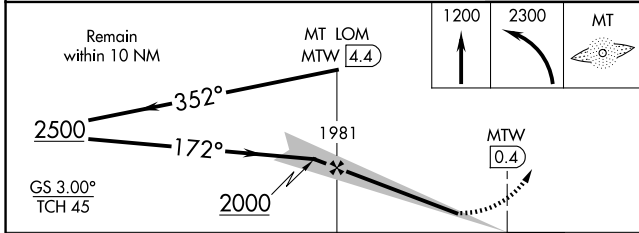
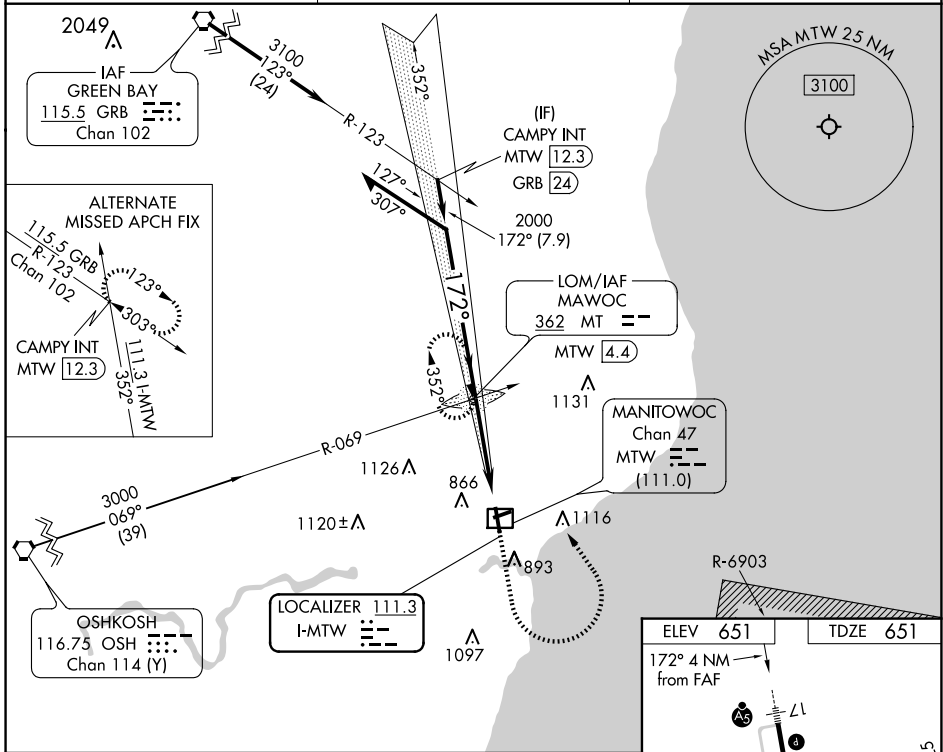
ADF required.

**MALSR**

MISSED APPROACH: Climb to 1200 then climbing left turn to 2300 direct MAWOC LOM and hold.

For inop ALS, increase S-LOC 17 Cat C/D visibility to 1 3/8 SM.

AWOS-3PT <b>123.775</b>	GREEN BAY APP CON* <b>120.2 338.2</b>	UNICOM <b>122.8 (CTAF)</b>
----------------------------	--	-------------------------------



CATEGORY	A	B	C	D
S-ILS 17	851-1/2		200 (200-1/2)	
S-LOC 17	1160-1/2 509 (600-1/2)		1160-1 509 (600-1)	
CIRCLING	1200-1 549 (600-1)		1420-2 7/4 769 (800-2 1/4)	1480-2 3/4 829 (900-2 3/4)

REIL Rwy 35

MIRL Rwy 7-25

HIRL Rwy 17-35

FAF to MAP 4 NM

Knots	60	90	120	150	180
Min:Sec	4:00	2:40	2:00	1:36	1:20

EC-3, 23 JAN 2025 to 20 FEB 2025

EC-3, 23 JAN 2025 to 20 FEB 2025