

WAAS CH 82611 W35A	APP CRS 352°	Rwy Idg TDZE Apt Elev	5001 651 651
--	------------------------	-----------------------------	---

RNAV (GPS) RWY 35

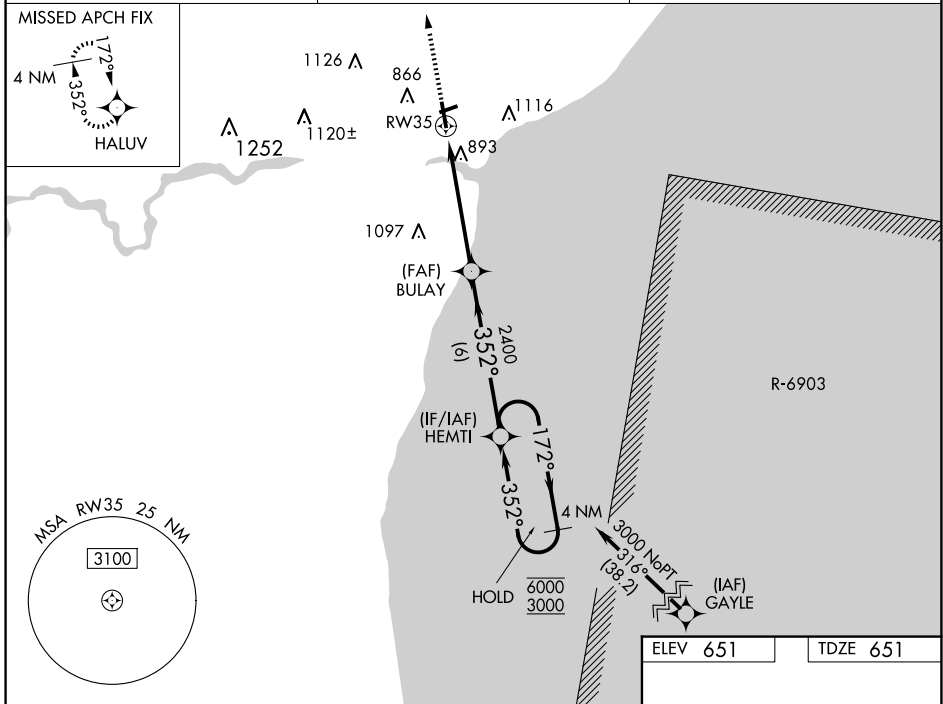
MANITOWOC COUNTY (MTW)

RNP APCH - GPS.

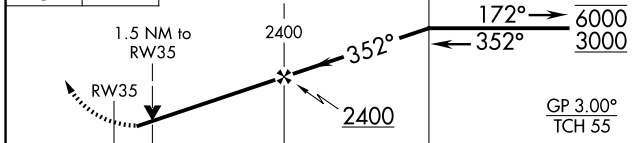
⚠ Rwy 35 helicopter visibility reduction below $\frac{3}{4}$ SM NA. For uncompensated Baro-VNAV systems, LNAV/VNAV NA below -16°C or above 54°C .

⚠ MISSED APPROACH: Climb to 3000 direct HALUV and hold.

AWOS-3PT 123.775	GREEN BAY APP CON ★ 120.2 338.2	UNICOM 122.8 (CTAF) ①
----------------------------	---	---------------------------------

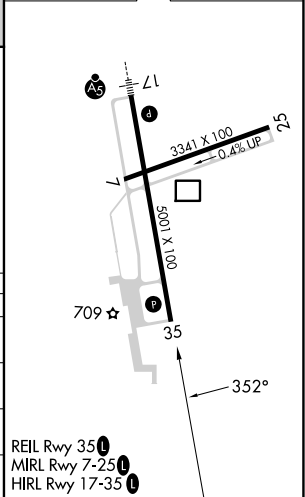


3000 HALUV VGSi and RNAV glidepath not coincident (VGSi Angle 3.00/TCH 44). 4 NM Holding Pattern



CATEGORY	A	B	C	D
LPV DA		957- $\frac{7}{8}$	306 (400- $\frac{7}{8}$)	
LNAV/VNAV DA		1199-1 $\frac{5}{8}$	548 (600-1 $\frac{5}{8}$)	
LNAV MDA	1160-1	509 (600-1)	1160-1 $\frac{3}{8}$	509 (600-1 $\frac{3}{8}$)
C CIRCLING	1200-1	549 (600-1)	1420-2 $\frac{1}{4}$ 769 (800-2 $\frac{1}{4}$)	1480-2 $\frac{3}{4}$ 829 (900-2 $\frac{3}{4}$)

ELEV 651	TDZE 651
----------	----------



EC-3, 23 JAN 2025 to 20 FEB 2025

EC-3, 23 JAN 2025 to 20 FEB 2025