

WAAS CH 65712 W26A	APP CRS 262°	Rwy Idg TDZE Apt Elev	3897 784 785
--	------------------------	-----------------------------	---

RNAV (GPS) RWY 26

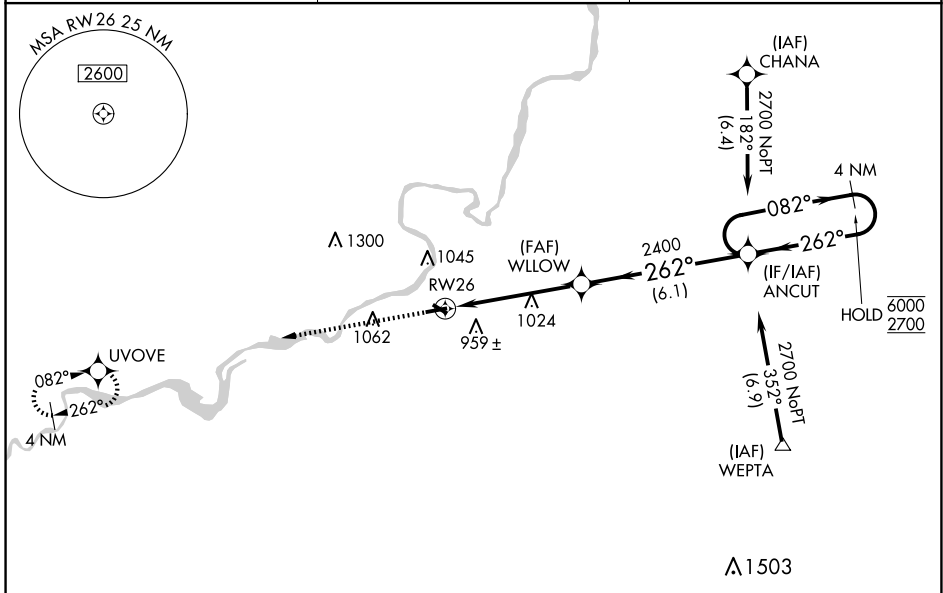
DIXON MUNI-CHARLES R WALGREEN FLD (C73)

RNP APCH - GPS.

⚠ Baro-VNAV and VDP NA when using Rochelle altimeter setting. Rwy 26 helicopter visibility reduction below $\frac{3}{4}$ SM NA. For uncompensated Baro-VNAV systems, LNAV/VNAV NA below -16°C or above 54°C . When local altimeter setting not received, use Rochelle altimeter setting and increase LPV DA to 1074 feet and all visibilities $\frac{1}{8}$ SM; increase LNAV/VNAV DA to 1266 feet; increase all MDAs 40 feet and LNAV visibility Cat C $\frac{1}{8}$ SM, and Circling visibility Cat C $\frac{1}{4}$ SM.

MISSED APPROACH:
Climb to 2700 direct UVOVE and hold.

AWOS-AV 118.575	ROCKFORD APP CON 126.0 327.0	UNICOM 123.05 (CTAF)
---------------------------	--	--------------------------------

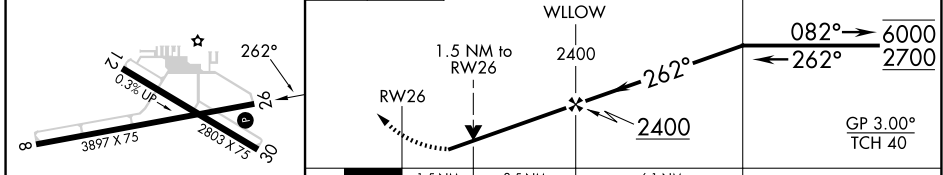


EC-3, 23 JAN 2025 to 20 FEB 2025

EC-3, 23 JAN 2025 to 20 FEB 2025

ELEV 785	TDZE 784
----------	----------

2700 UVOVE VGSI and RNAV glidepath not coincident (VGSI Angle 3.00/TCH 21). 4 NM Holding Pattern



CATEGORY	A	B	C	D
LPV DA	1034- $\frac{3}{4}$	250 (300- $\frac{3}{4}$)		NA
LNAV/VNAV DA	1226-1 $\frac{3}{8}$	442 (500-1 $\frac{3}{8}$)		NA
LNAV MDA	1280-1	496 (500-1)	1280-1 $\frac{3}{8}$ 496 (500-1 $\frac{3}{8}$)	NA
CIRCLING	1300-1 515 (600-1)	1400-1 615 (700-1)	1420-1 $\frac{3}{4}$ 635 (700-1 $\frac{3}{4}$)	NA

REIL Rwy 8 **Ⓛ**
MIRL Rwy 8-26 and 12-30 **Ⓛ**

DIXON, ILLINOIS DIXON MUNI-CHARLES R WALGREEN FLD (C73)

Amdt 1 25JAN24

41°50'N-89°27'W

RNAV (GPS) RWY 26