

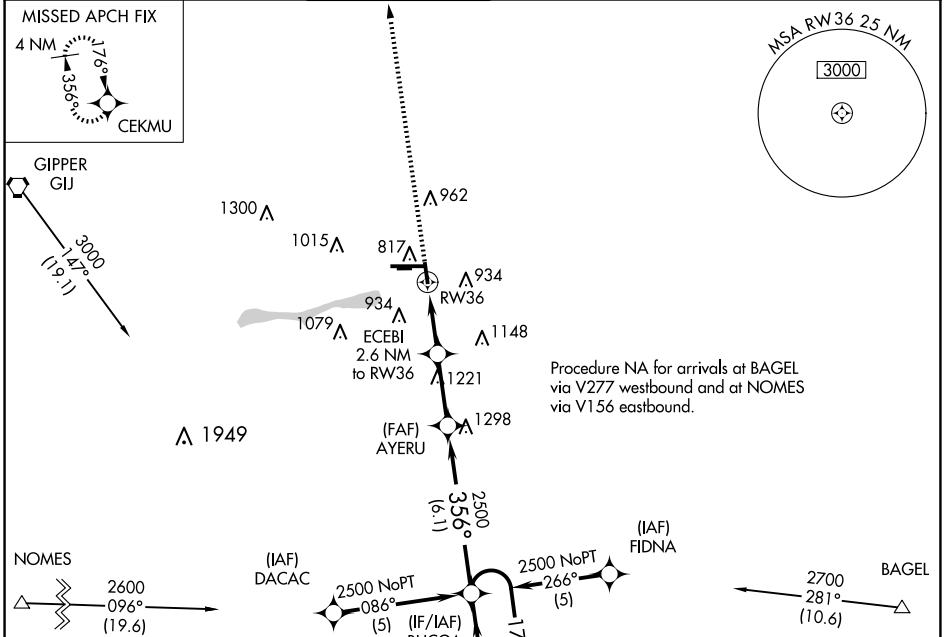
APP CRS	Rwy Idg	<b>3999</b>
<b>356°</b>	TDZE	<b>776</b>
	Apt Elev	<b>778</b>

# RNAV (GPS) RWY 36

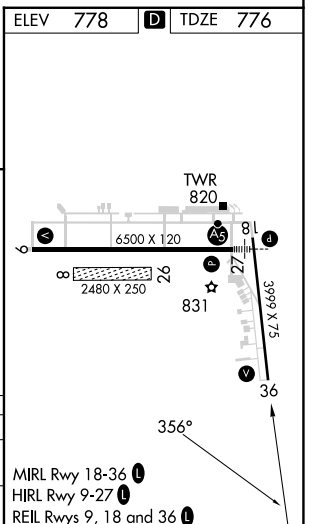
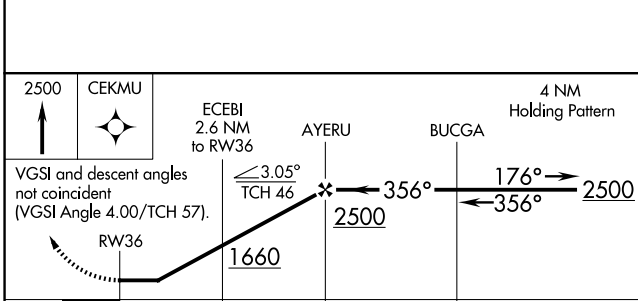
ELKHART MUNI (EKM)

RNP APCH.				MISSED APPROACH: Climb to 2500 direct CEKMU and hold.	
<p><b>▼</b> When local altimeter setting not received, use South Bend altimeter setting and increase all MDA 40 feet. Straight-in and Circling RWY 36 NA at night. Rwy 36 helicopter visibility reduction below 1 SM NA. Circling NA to Rwys 8 and 26.</p>					

AWOS-3	SOUTH BEND APP CON *	ELKHART TOWER *	GND CON	CLNC DEL	CLNC DEL	UNICOM
<b>124.475</b>	<b>118.55 257.8</b>	<b>119.5 (CTAF) 0</b>	<b>121.8</b>	<b>121.8</b>	<b>119.7</b> (When twr closed)	<b>122.95</b>



ELEV	<b>778</b>	<b>D</b>	TDZE	<b>776</b>
------	------------	----------	------	------------



CATEGORY	A	B	C	D
LNVA MDA	1220-1	444 (500-1)	1220-1¼ 444 (500-1¼)	1220-1½ 444 (500-1½)
<b>C</b> CIRCLING	1240-1 462 (500-1)	1300-1 522 (600-1)	1380-1¾ 602 (700-1¾)	1580-2½ 802 (900-2½)

EC-2, 23 JAN 2025 to 20 FEB 2025

EC-2, 23 JAN 2025 to 20 FEB 2025