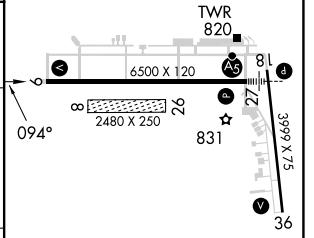
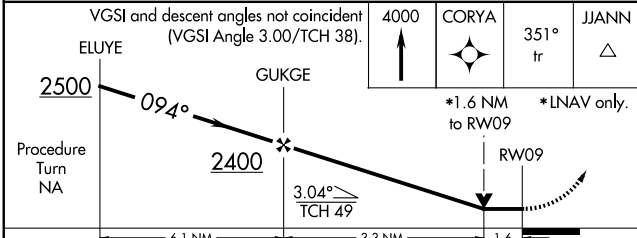
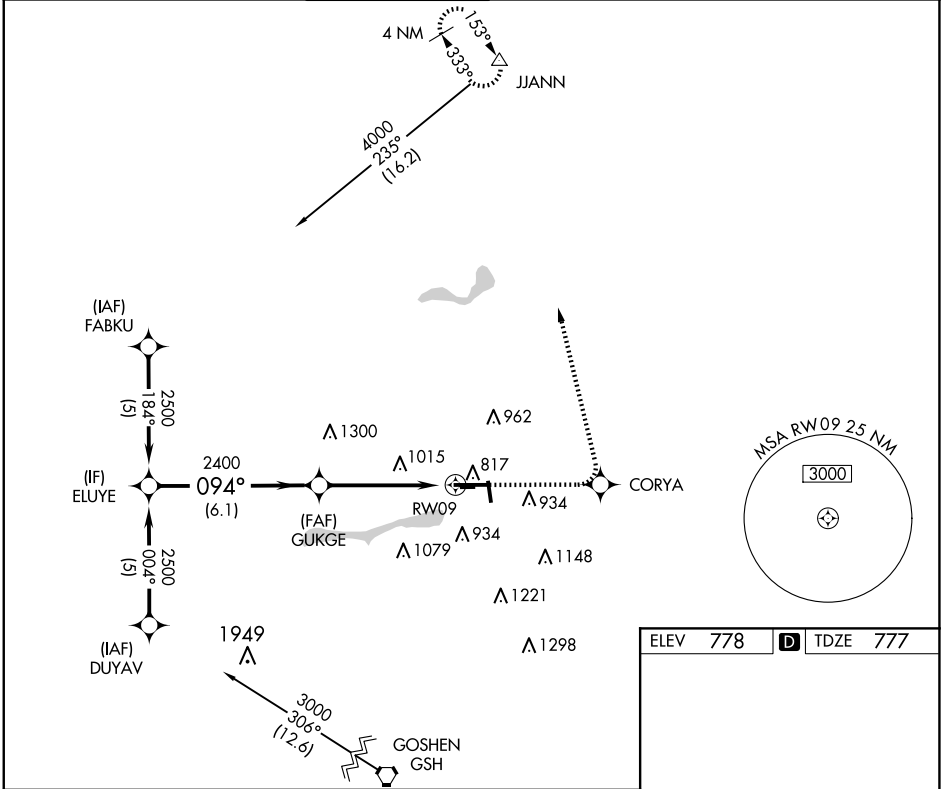


APP CRS	Rwy Idg	6500
094°	TDZE	777
	Apt Elev	778

RNAV (GPS) RWY 9

ELKHART MUNI (EKM)

RNP APCH.			MISSED APPROACH: Climb to 4000 direct CORYA and via 351° track to JJANN and hold.						
<p>▽ VDP NA when using South Bend altimeter setting. Circling Rwy 36 NA at night. Circling NA to Rwy 8 and 26. Rwy 9 helicopter visibility reduction below ¾ SM NA. When local altimeter setting not received, use South Bend altimeter setting and increase all MDA 40 feet.</p> <p>▲</p>			AWOS-3 124.475	SOUTH BEND APP CON * 118.55 257.8	ELKHART TOWER * 119.5 (CTAF) 0	GND CON 121.8	CLNC DEL 121.8	CLNC DEL 119.7 (When twr closed)	UNICOM 122.95



CATEGORY	A	B	C	D
LNVA MDA	1340-1	563 (600-1)	1340-1½ 563 (600-1½)	1340-1¾ 563 (600-1¾)
C CIRCLING	1340-1	562 (600-1)	1380-1¾ 602 (700-1¾)	1580-2½ 802 (900-2½)

MIRL Rwy 18-36 **0**
HIRL Rwy 9-27 **0**
REIL Rwy 9, 18 and 36 **0**

EC-2, 23 JAN 2025 to 20 FEB 2025

EC-2, 23 JAN 2025 to 20 FEB 2025