

VORTAC GJL 115.4 Chan 101	APP CRS 102°	Rwy Idg TDZE Apt Elev 6500 777 778
---	------------------------	--

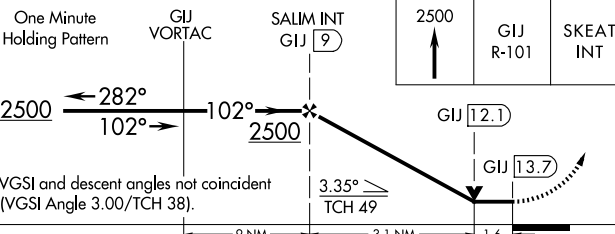
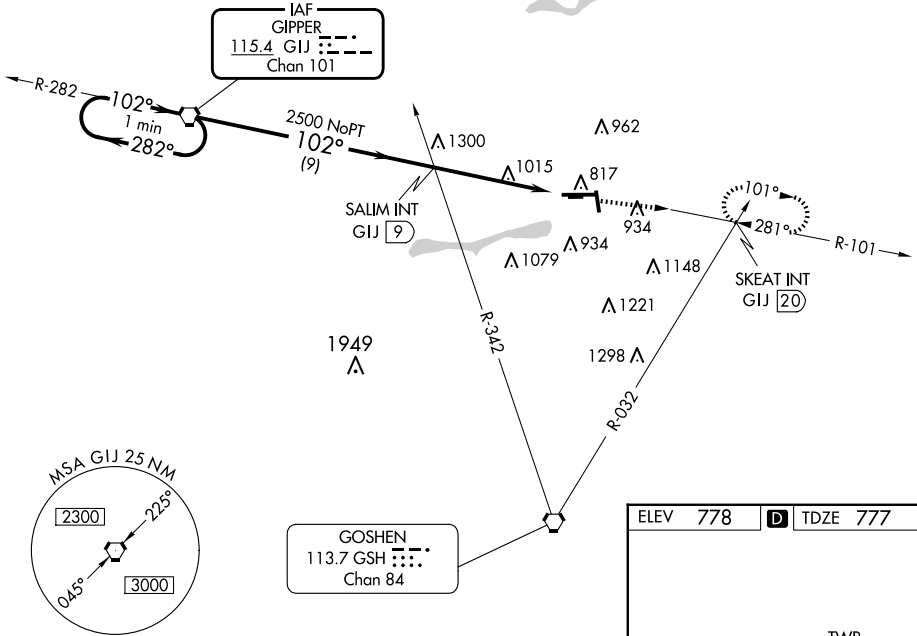
VOR RWY 9
ELKHART MUNI (EKM)

⚠ Circling Rwy 36 NA at night. Circling NA to Rwy 8 and 26. Rwy 9 helicopter visibility reduction below 3/4 SM NA. When local altimeter setting not received, use South Bend altimeter setting and increase all MDA 40 feet. VDP NA when using South Bend altimeter setting.

MISSED APPROACH: Climb to 2500 via GJL R-101 to SKEAT INT/GJL 20 DME and hold.

AWOS-3 124.475	SOUTH BEND APP CON ★ 118.55 257.8	ELKHART TOWER ★ 119.5 (CTAF) 0	GND CON 121.8	CLNC DEL 121.8	CLNC DEL 119.7 (When twr closed)	UNICOM 122.95
--------------------------	---	---	-------------------------	--------------------------	---	-------------------------

NoPT for arrivals on GJL VORTAC
airway radials 209 CW 310.



ELEV 778	D TDZE 777
----------	------------

TWR 820

6500 X 120

2480 X 250

81

831

36

5/4 X 6666

MIRL Rwy 18-36

HIRL Rwy 9-27

REIL Rwys 9, 18 and 36

FAF to MAP 4.7 NM

Knots	60	90	120	150	180
Min:Sec	4:42	3:08	2:21	1:53	1:34

CATEGORY	A	B	C	D
S-9	1340-1 563 (600-1)		1340-1½ 563 (600-1½)	1340-1¾ 563 (600-1¾)
CIRCLING	1340-1 562 (600-1)		1380-1¾ 602 (700-1¾)	1580-2½ 802 (900-2½)

EC-2, 23 JAN 2025 to 20 FEB 2025

EC-2, 23 JAN 2025 to 20 FEB 2025