

# PTOMC TWO DEPARTURE (RNAV)

NE-3, 23 JAN 2025 to 20 FEB 2025

**DEPARTURE ROUTE DESCRIPTION**

**TAKEOFF RUNWAY 17:** Climb heading 171° to 900, then climbing right turn direct to cross PTOMC at 3000, do not exceed 210K until PTOMC, thence . . .

**TAKEOFF RUNWAY 35:** Climb heading 351° to 900, then climbing left turn direct to cross PTOMC at 3000, do not exceed 210K until PTOMC, thence . . .

. . . on heading 310°, maintain 3000, expect radar vectors on course. Expect filed altitude within ten (10) minutes after departure.

WESTMINSTER  
EMI

NOTE: DME/DME/IRU or GPS required.  
NOTE: RNAV 1.  
NOTE: RADAR required.

BALTIMORE  
BAL

SWANN  
SWANN

BROSS  
BROSS

PALEO  
PALEO

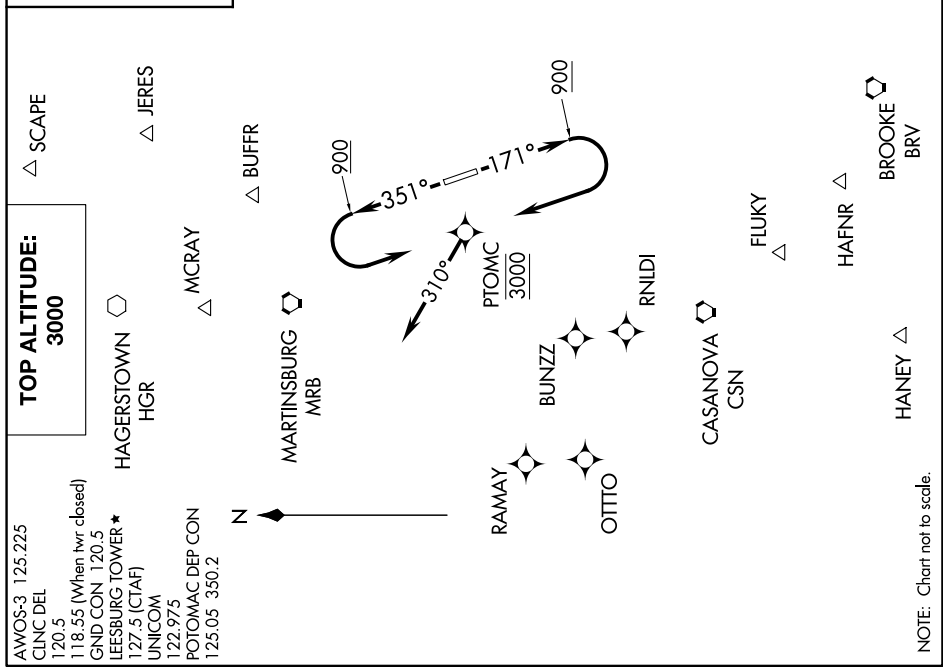
AGARD  
AGARD

WOOLY  
WOOLY

**TAKEOFF MINIMUMS:**

Rwy 17: Standard with minimum climb of 500' per NM to 900. Then 327' per NM to 3000.

Rwy 35: Standard with minimum climb of 500' per NM to 900. Then 370' per NM to 3000.



# PTOMC TWO DEPARTURE (RNAV)

NE-3, 23 JAN 2025 to 20 FEB 2025