

VOR/DME GDM <b>116.95</b> Chan <b>116</b> (Y)	APP CRS <b>097°</b>	Rwy Idg TDZE Apt Elev <b>955</b>	<b>N/A</b> <b>N/A</b> <b>955</b>
---	------------------------	---	--

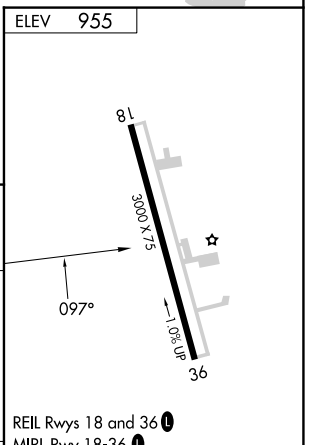
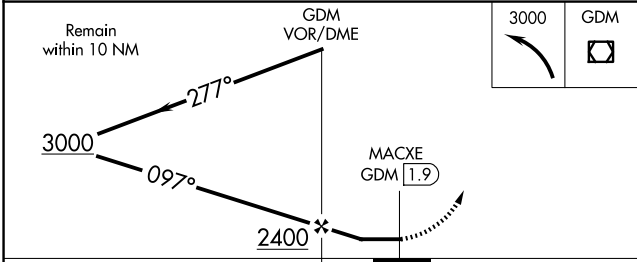
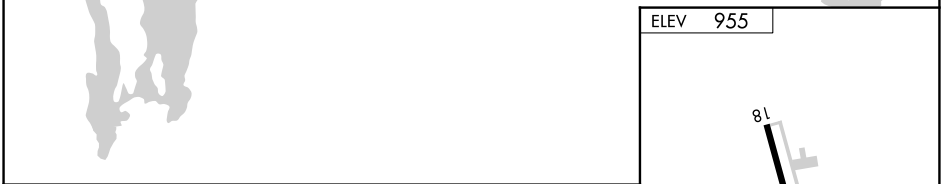
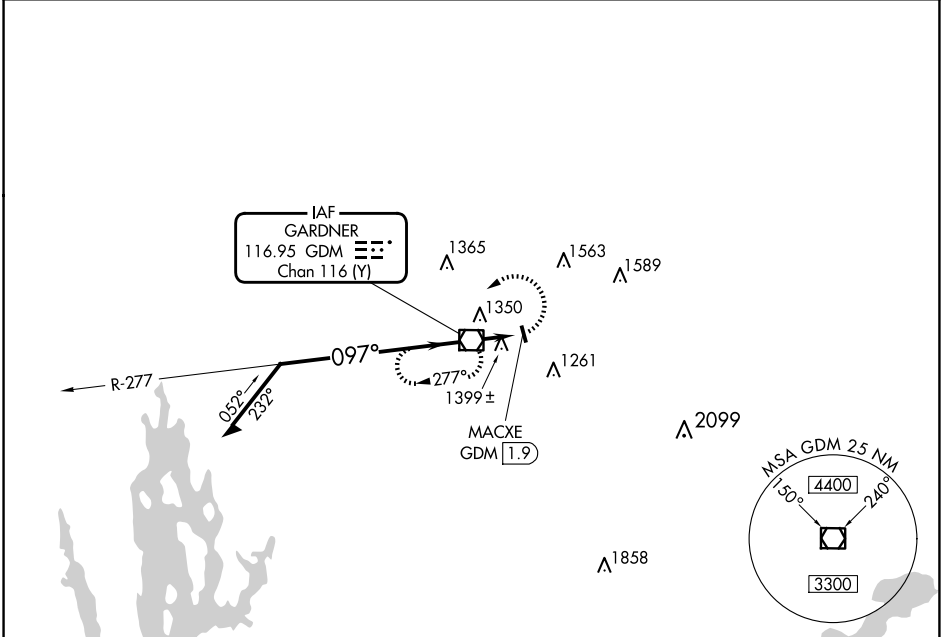
# VOR-A

GARDNER MUNI (GDM)

**⚠ NA** Use Worcester altimeter setting, when not received use Orange Muni altimeter setting and increase all MDA 40 feet, increase Circling Cats A/B visibility ¼ SM. Procedure NA at night. Helicopter visibility reduction below 1 SM NA.

**MISSED APPROACH:** Climbing left turn to 3000 direct GDM VOR/DME and hold, continue climb-in-hold to 3000.

<b>BOSTON CENTER</b> <b>123.75 338.2</b>	<b>UNICOM</b> <b>122.8</b> (CTAF) <b>📻</b>
---	---



CATEGORY	A	B	C	D	FAF to MAP 1.9 NM					
CIRCLING	1760-1 805 (900-1)	1760-1¼ 805 (900-1¼)	1980-3	1025 (1100-3)	Knots	60	90	120	150	180
					Min:Sec	1:54	1:16	0:57	0:46	0:38

NE-1, 23 JAN 2025 to 20 FEB 2025

NE-1, 23 JAN 2025 to 20 FEB 2025