

WAAS CH 62918 W01A	APP CRS 015°	Rwy Idg TDZE Apt Elev	5705 1985 1985
--	------------------------	-----------------------------	---

RNAV (GPS) RWY 1

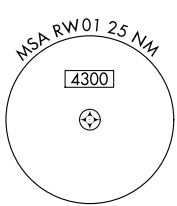
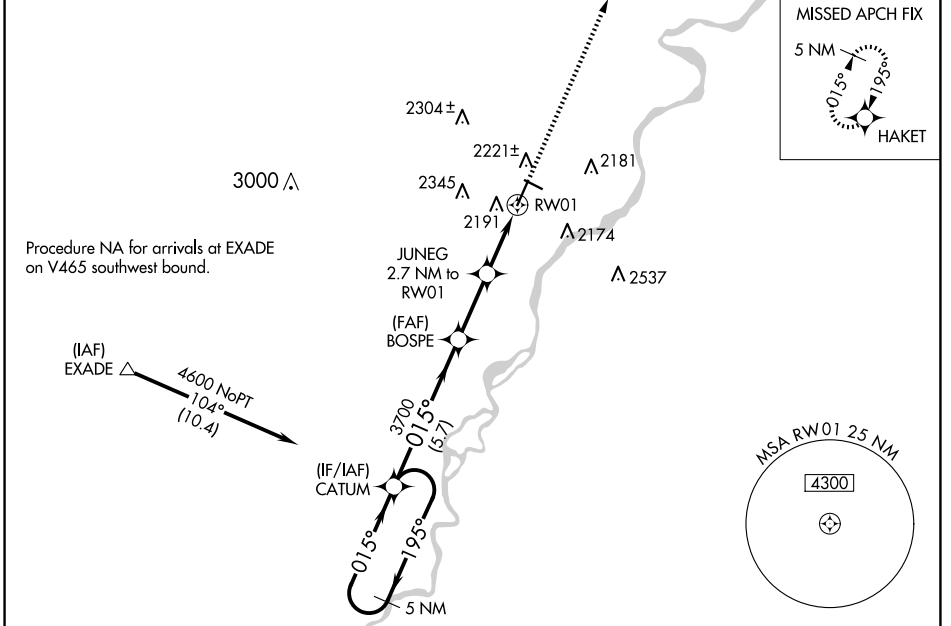
SIDNEY-RICHLAND RGNL (SDY)

RNP APCH - GPS.

▼ For uncompensated Baro-VNAV systems, LNAV/VNAV NA below
▲ -20°C or above 54°C. Circling Rwy 11, 29 NA at night.

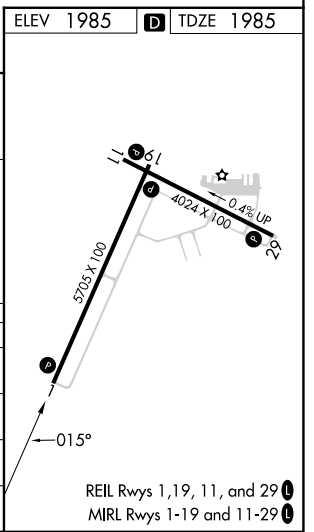
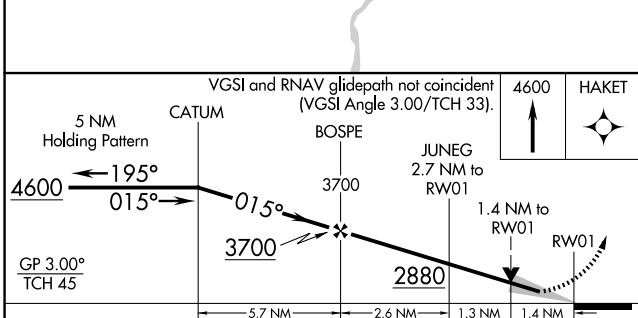
MISSED APPROACH: Climb to
4600 direct HAKET and hold.

AWOS-3PT 119.275	SALT LAKE CENTER 126.85 305.2	UNICOM 122.8 (CTAF) 0
----------------------------	---	---------------------------------



NW-1, 23 JAN 2025 to 20 FEB 2025

NW-1, 23 JAN 2025 to 20 FEB 2025



CATEGORY	A	B	C	D
LPV DA		2238-7/8	253 (300-7/8)	
LNAV/VNAV DA		2419-1 1/2	434 (500-1 1/2)	
LNAV MDA	2460-1	475 (500-1)	2460-1 3/8	475 (500-1 3/8)
CIRCLING	2580-1 595 (600-1)	2660-1 675 (700-1)	2700-2 715 (800-2)	2840-2 3/4 855 (900-2 3/4)