

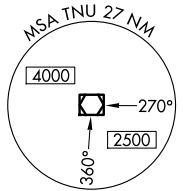
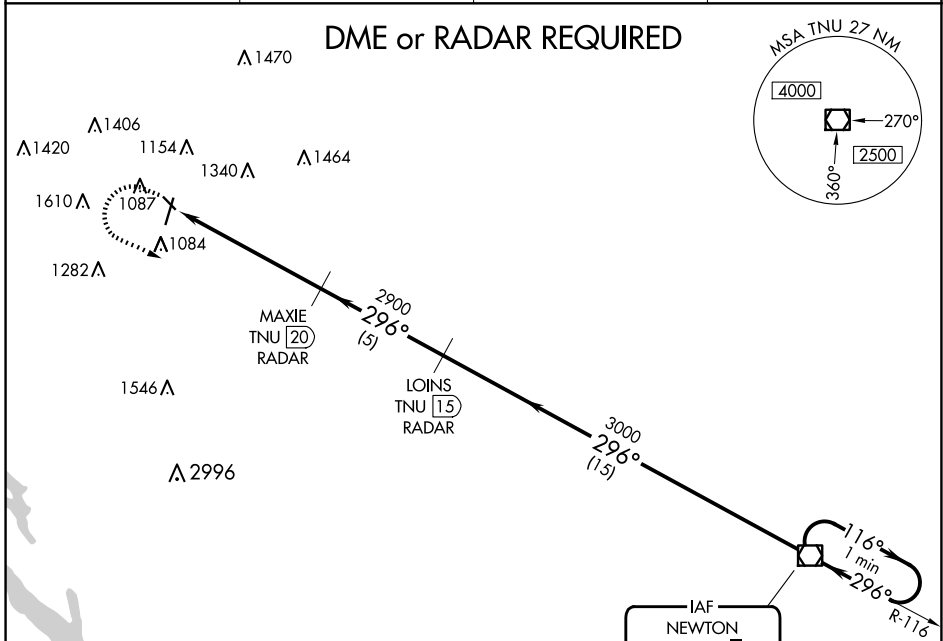
VOR/DME TNU <b>112.5</b> Chan <b>72</b>	APP CRS <b>296°</b>	Rwy Idg TDZE <b>930</b> Apt Elev <b>956</b>
---	------------------------	---

# VOR RWY 31

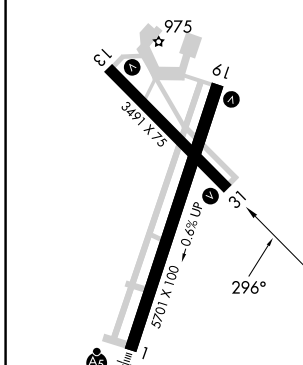
AMES MUNI (AMW)

-27°C Rwy 31 helicopter visibility reduction below 1 SM NA. Straight-in and Circling Rwy 31 NA at night.	MISSED APPROACH: Climb to 2000, then climbing left turn to 3000 direct TNU VOR/DME and hold.
--	--

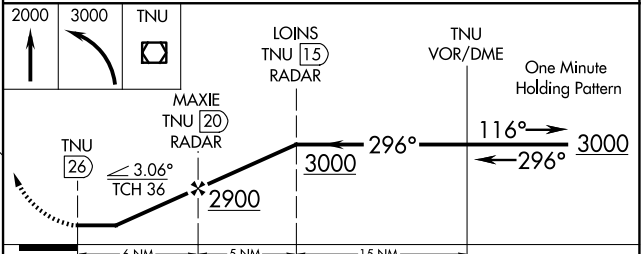
ASOS <b>132.025</b>	DES MOINES APP CON <b>123.9 307.15</b>	CLNC DEL <b>126.0</b>	UNICOM <b>122.7 (CTAF)</b>
------------------------	---	--------------------------	-------------------------------



ELEV 956	TDZE 930
----------	----------



NoPT for arrivals on TNU VOR/DME  
airway radials 031 CW 081.



CATEGORY	A	B	C	D
S-31	1580-1	650 (700-1)	1580-1 7/8 650 (700-1 7/8)	NA
CIRCLING	1580-1	624 (700-1)	1640-2 684 (700-2)	NA

NC-3, 23 JAN 2025 to 20 FEB 2025

NC-3, 23 JAN 2025 to 20 FEB 2025